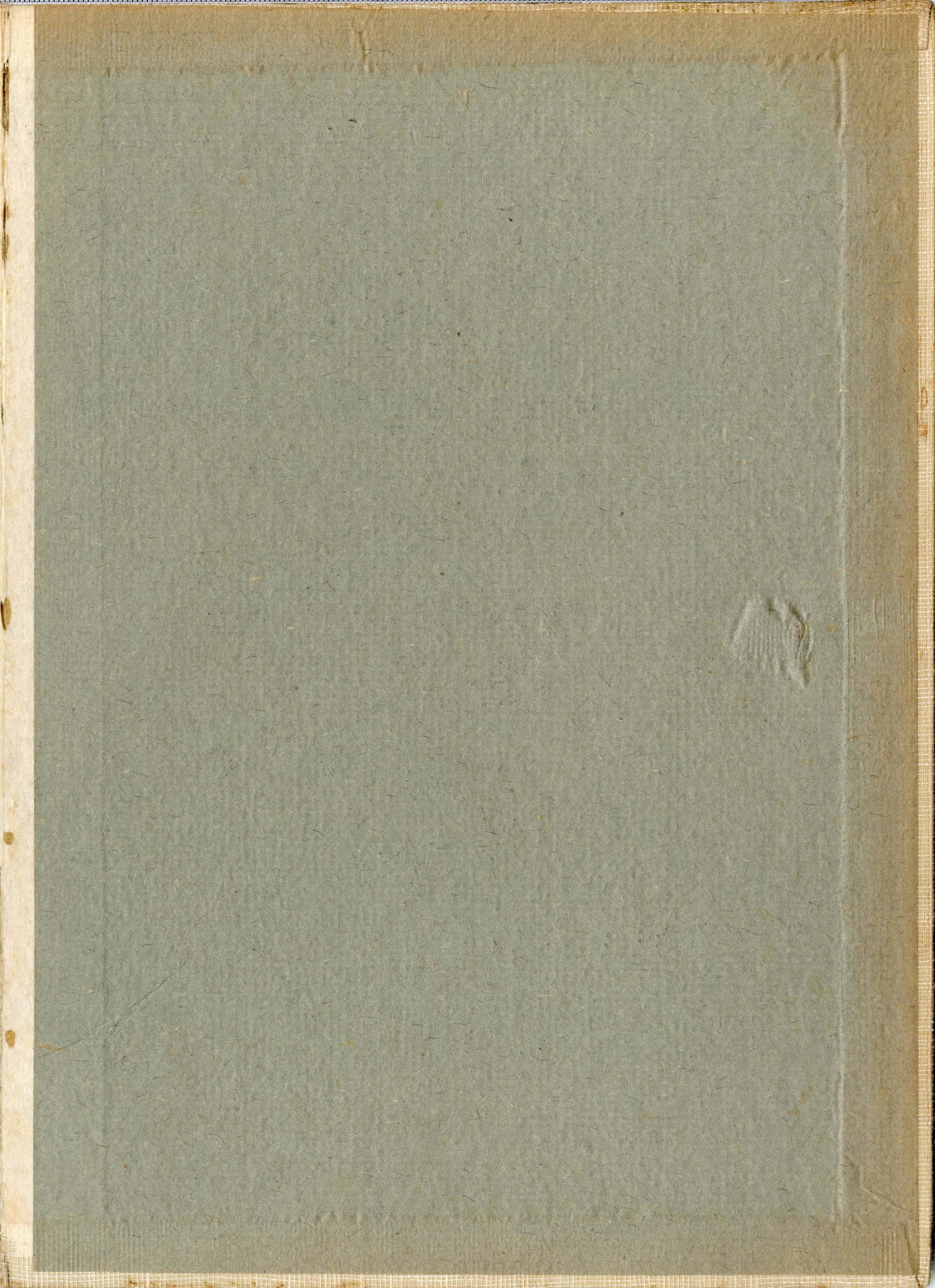


華 の 襖

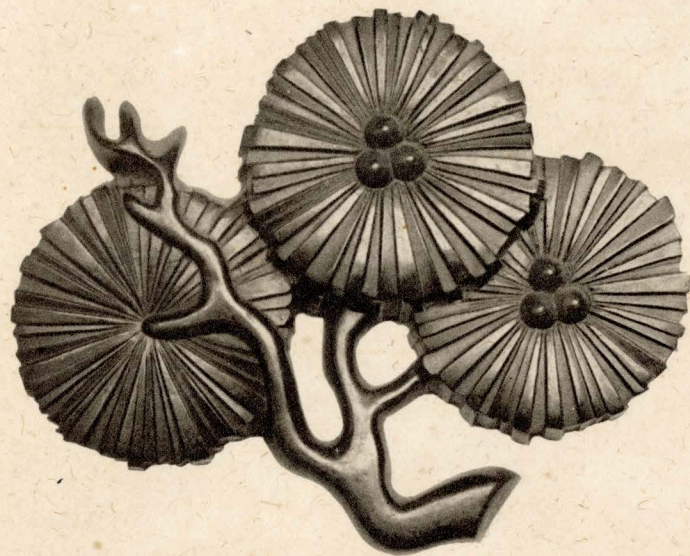
— — — — —
錄 圖 常 中 京 都



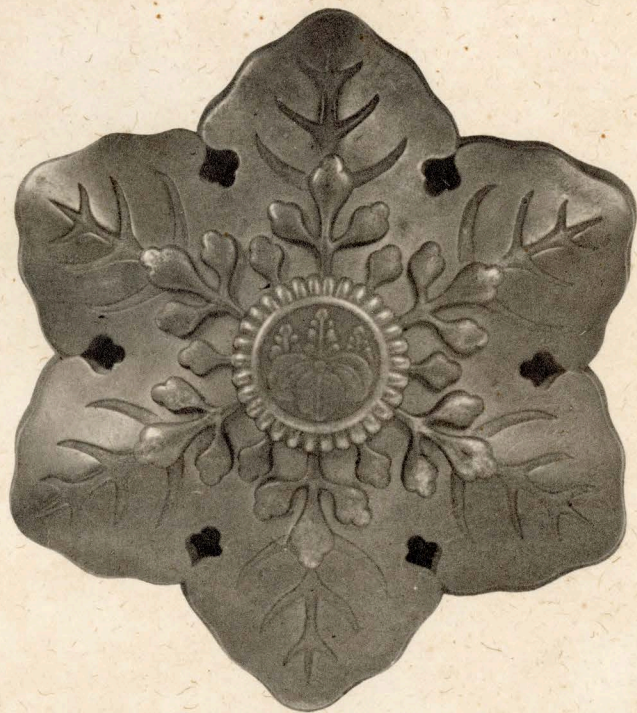


御
釘
隱
第壹圖

壹
號



貳
號



御釘隱 第貳圖

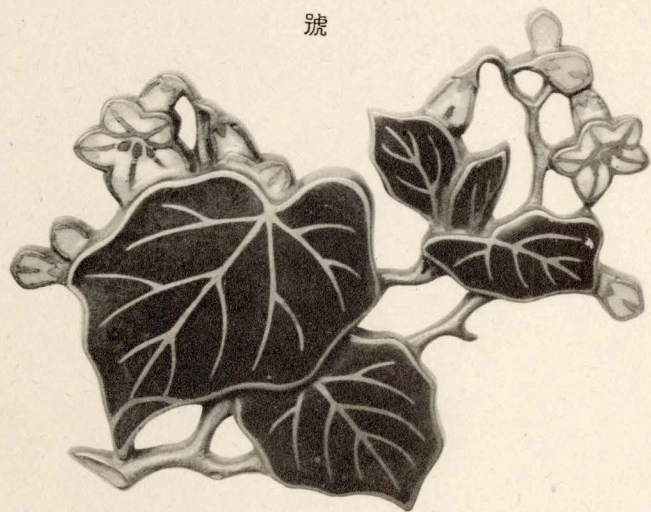
參
號



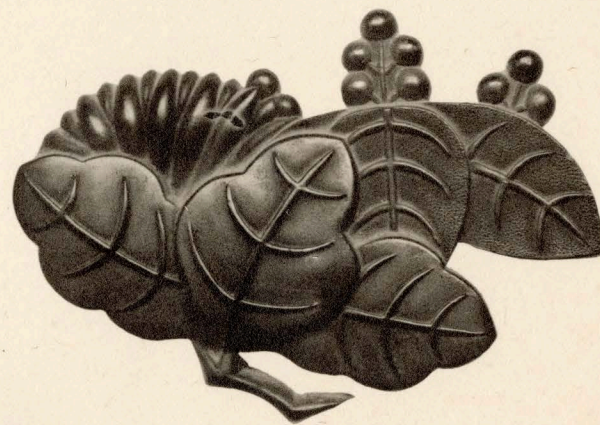
四
號



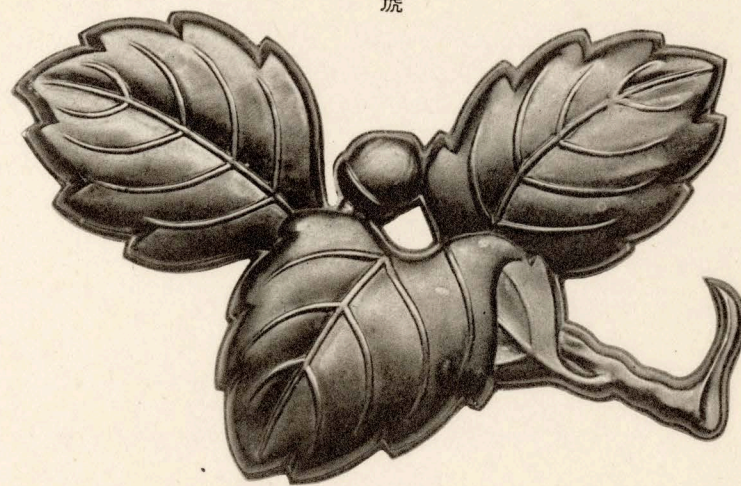
六
號



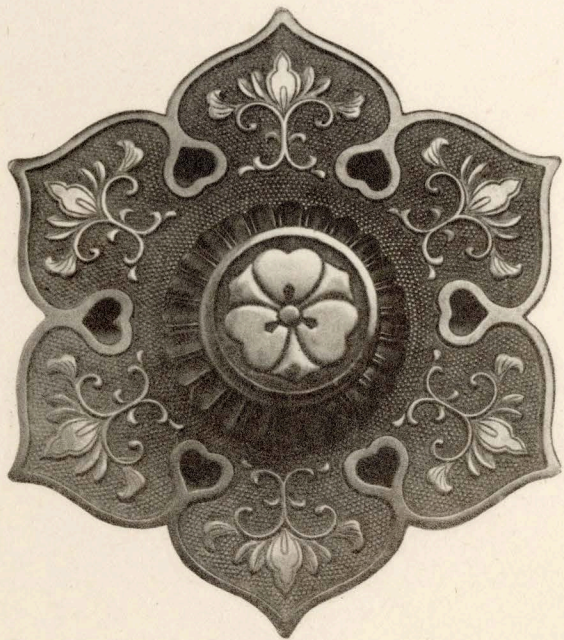
五
號



七
號

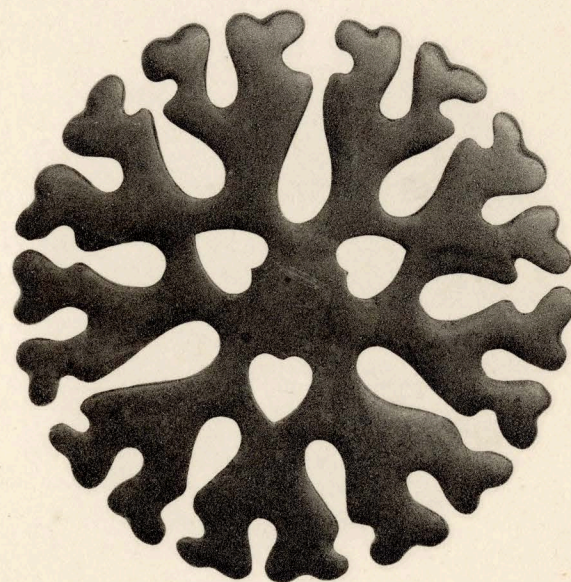


八
號



御釘隱第五圖

九
號

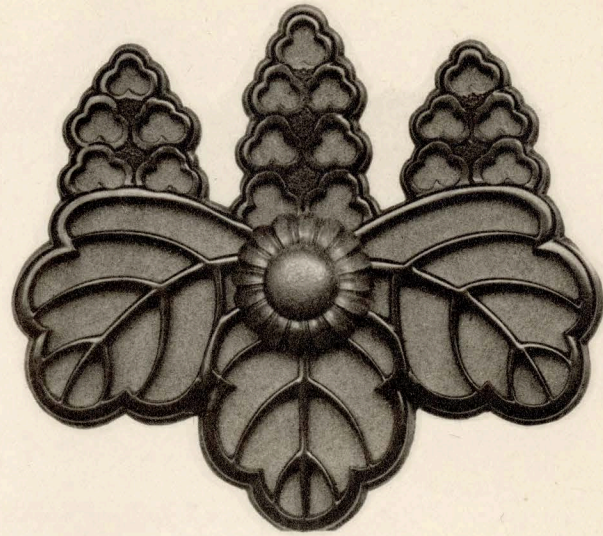


拾
號

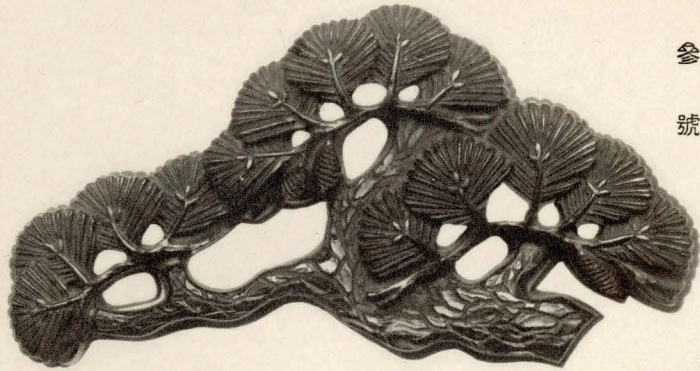


御釘隱第六圖

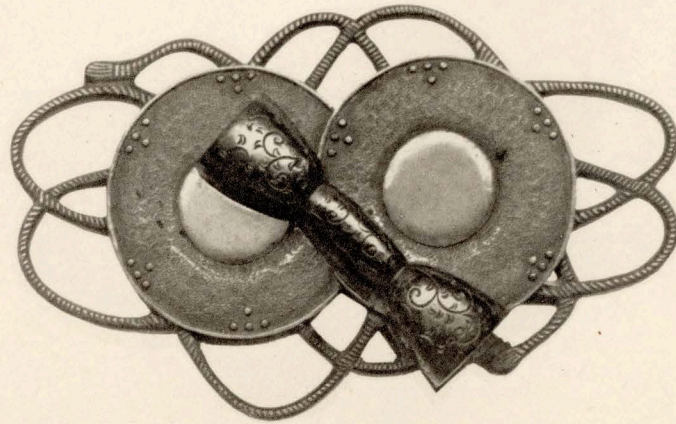
拾壹號



拾參號

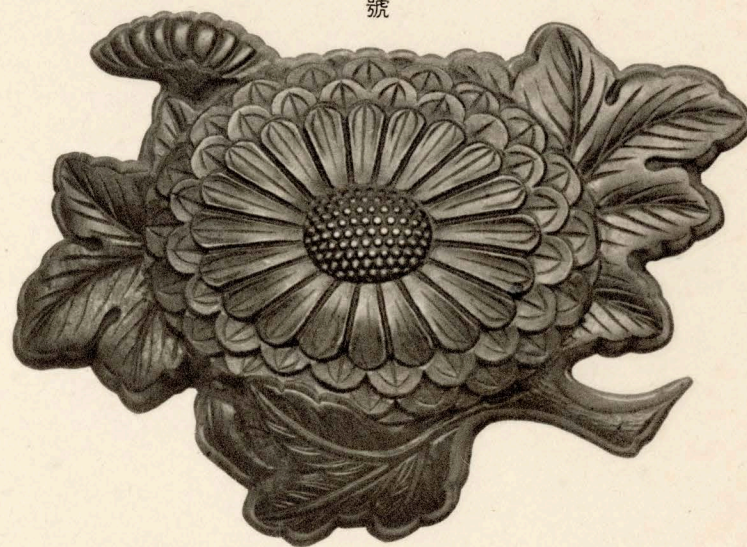


拾貳號



御釘隱第七圖

拾
四
號

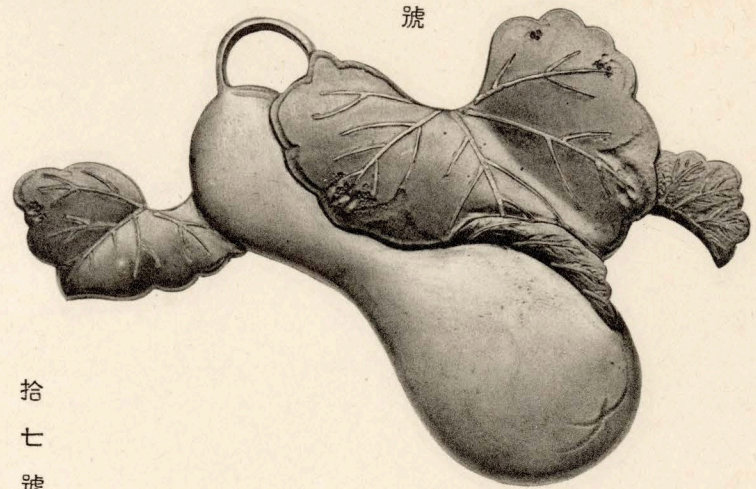


拾
五
號

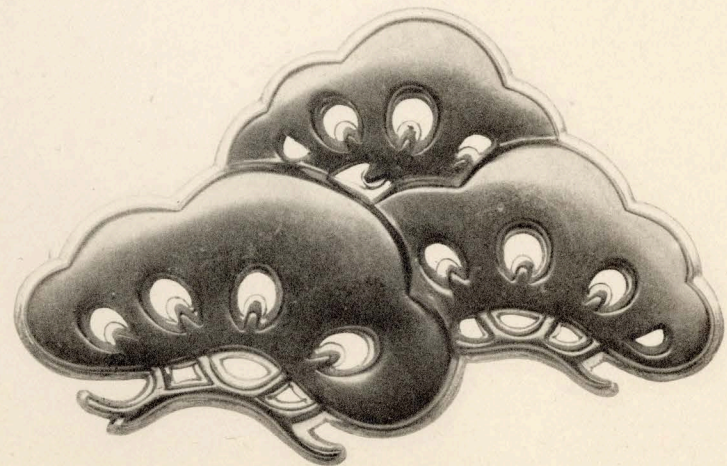


御釘隱第八圖

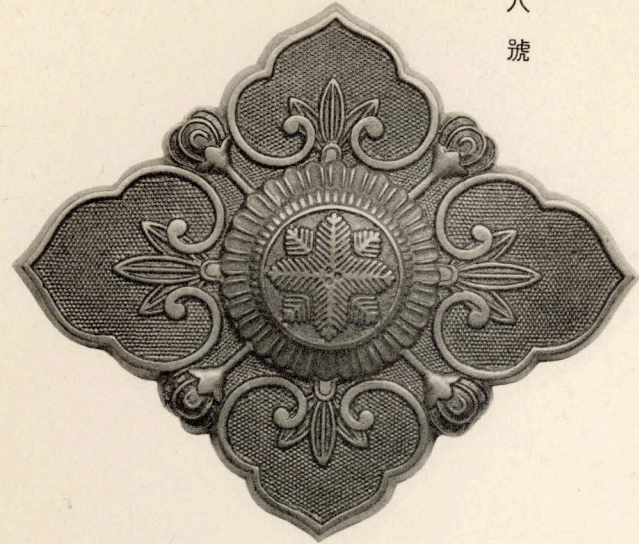
拾六號



拾七號

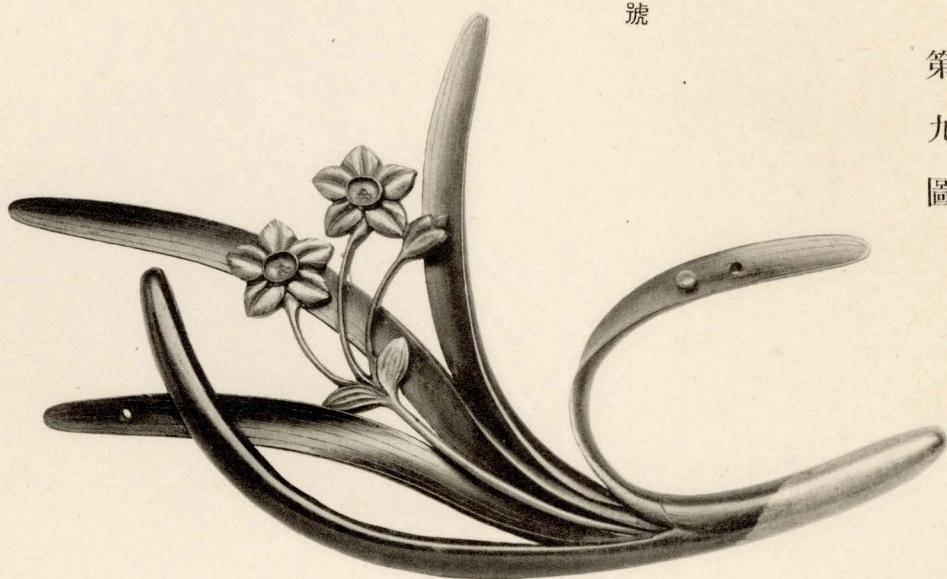


拾八號

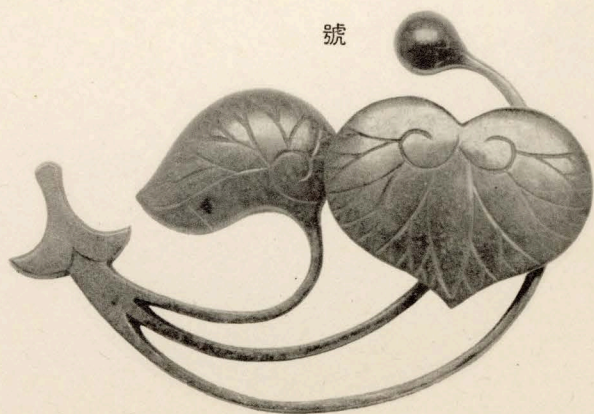


御釘隱第九圖

拾九號

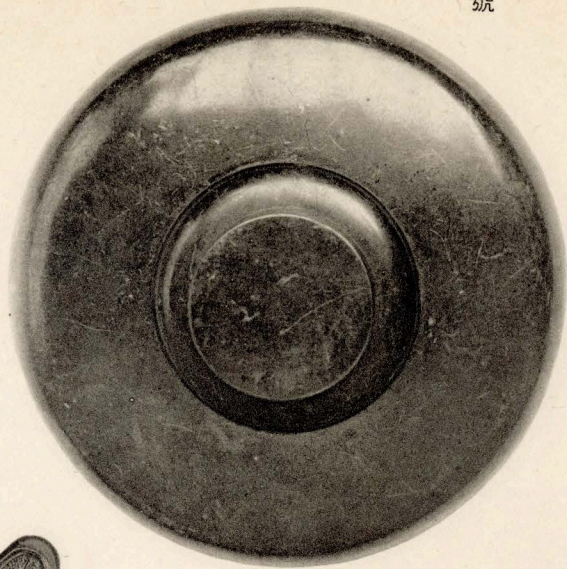


貳拾號

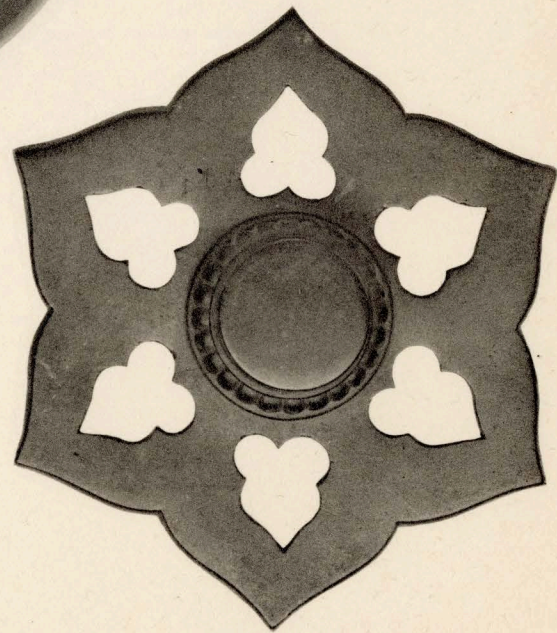


御釘隱 第拾圖

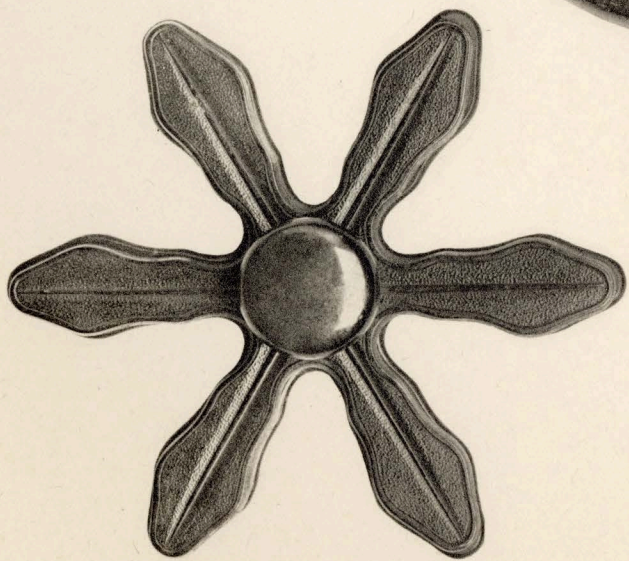
貳拾貳號



貳拾壹號

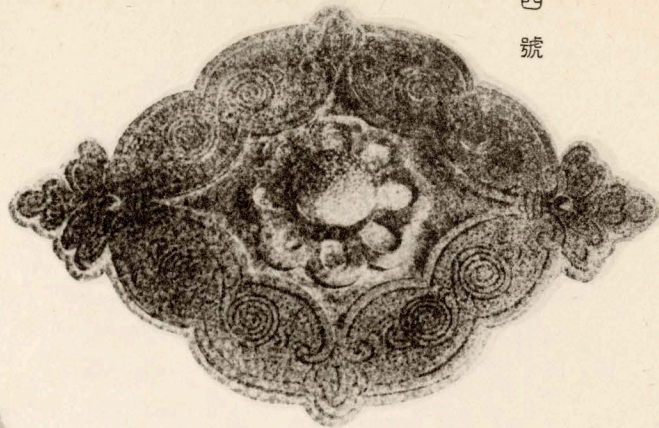


貳拾參號



御釘隱第拾壹圖

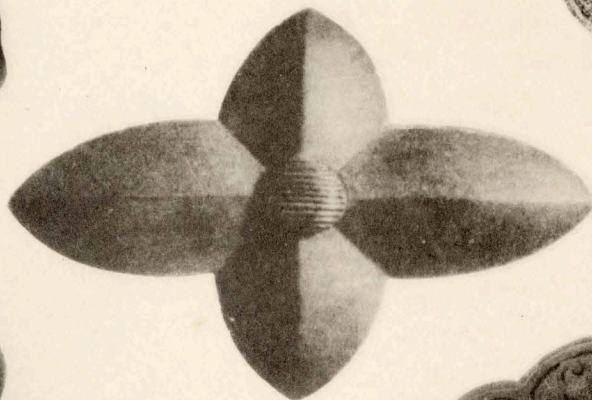
貳拾四號



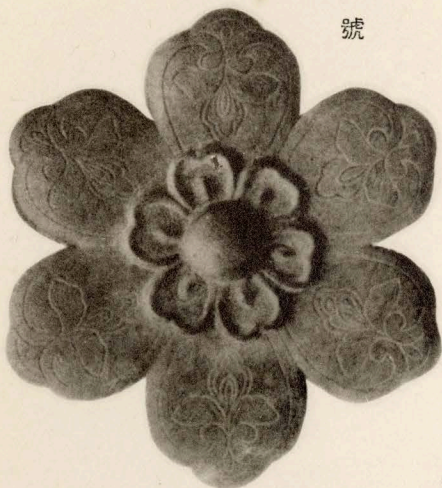
貳拾五號



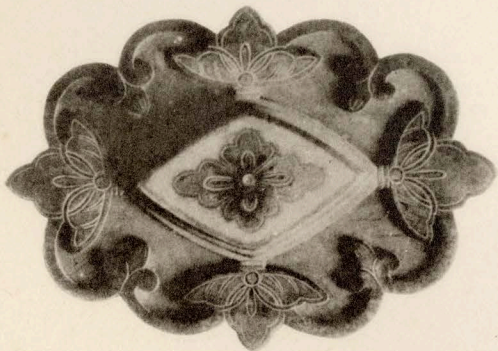
貳拾六號



貳拾七號

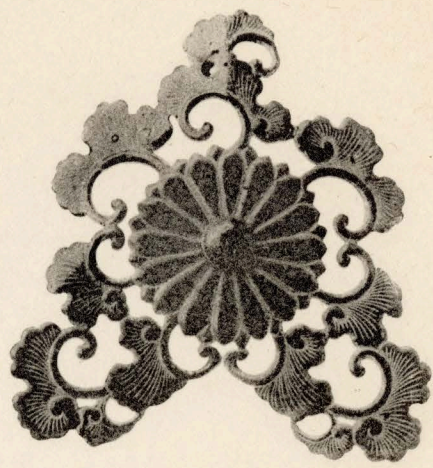


貳拾八號

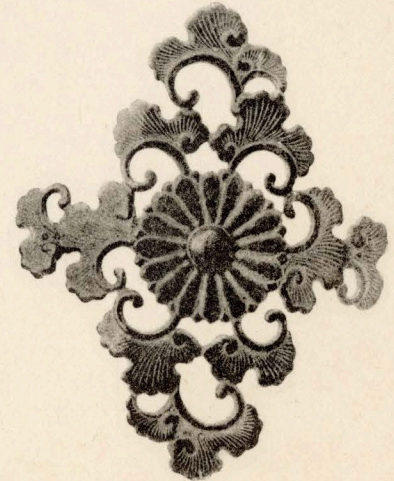


御釘隱 第拾貳圖

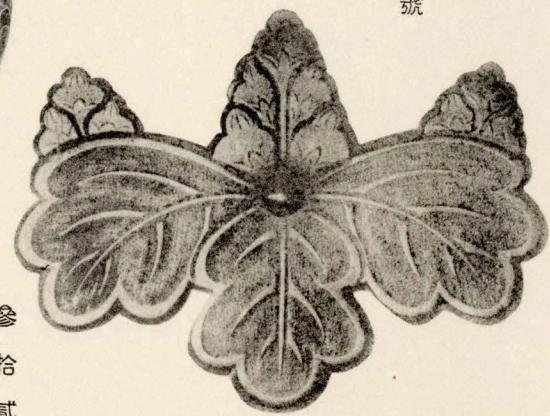
貳拾九號



參拾參號

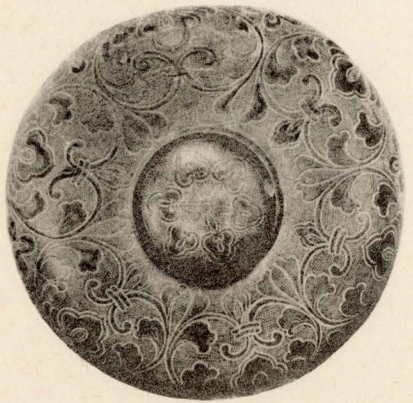
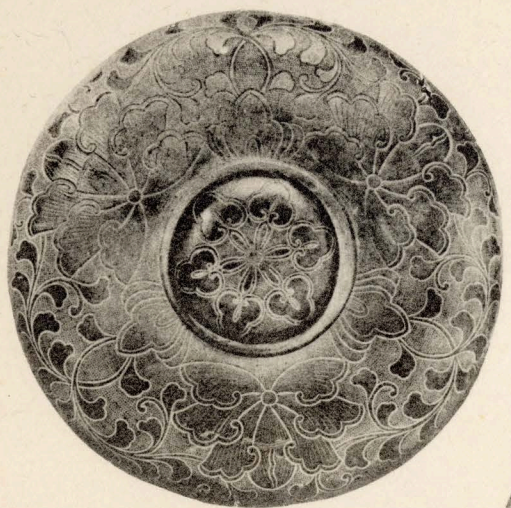


參拾號



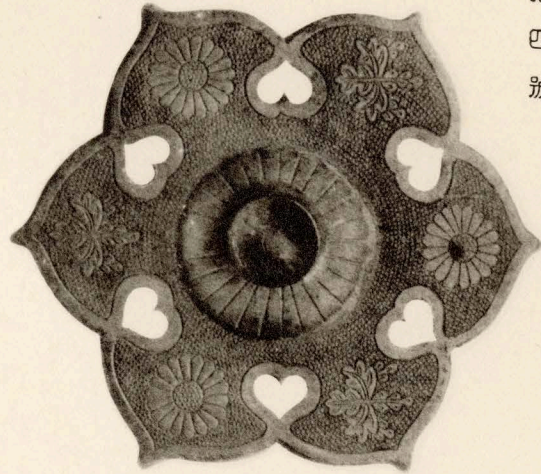
參拾壹號

參拾貳號

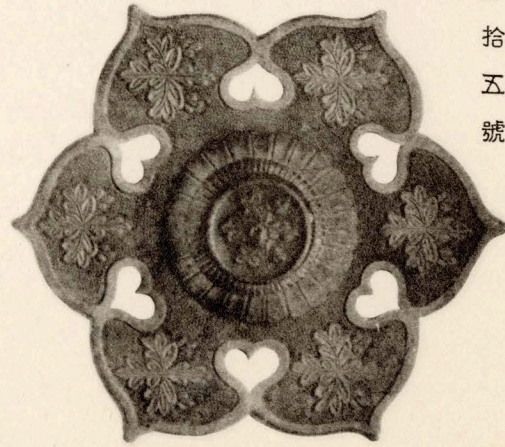


御釘隱 第拾參圖

參拾四號



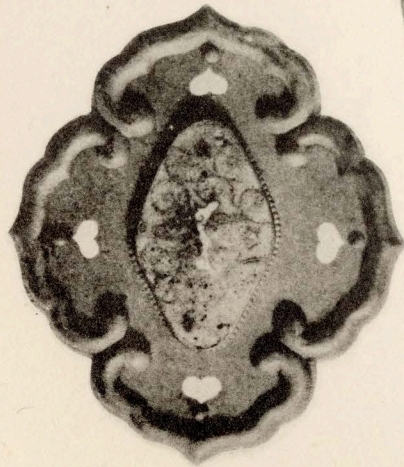
參拾五號



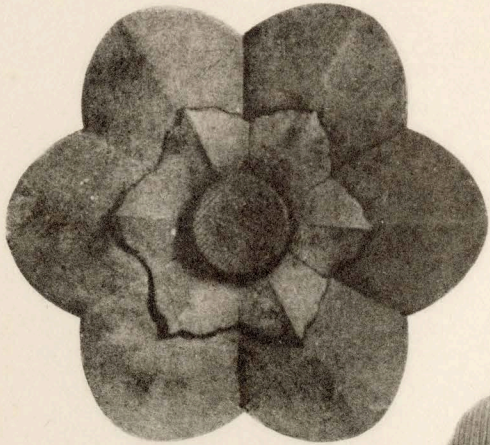
參拾七號



參拾八號

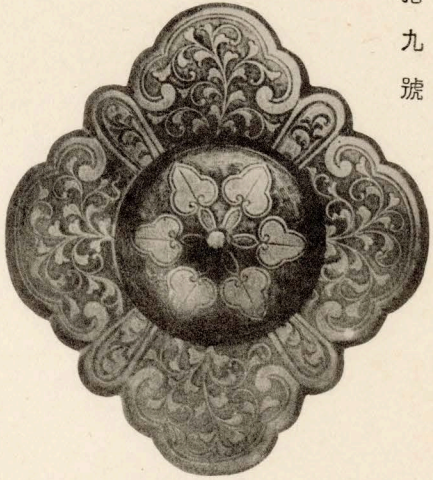


參拾六號

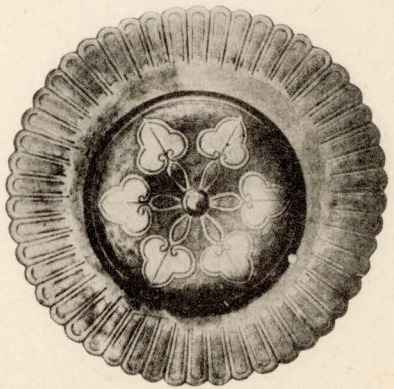


御釘隱 第拾四圖

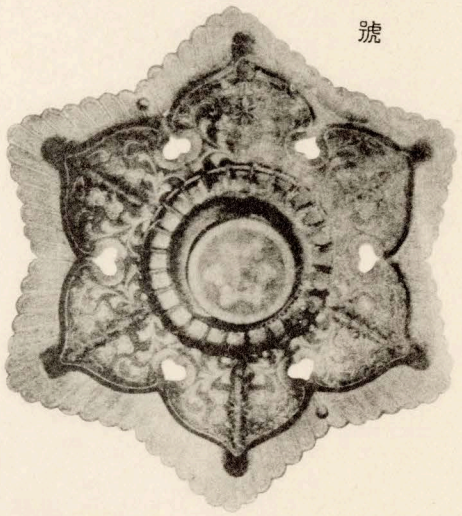
參拾九號



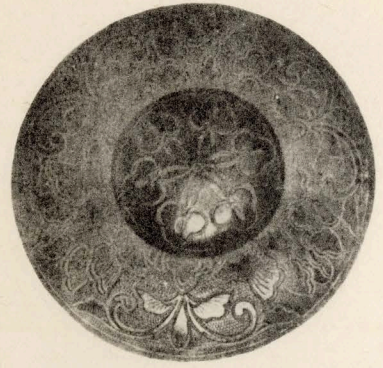
四拾號



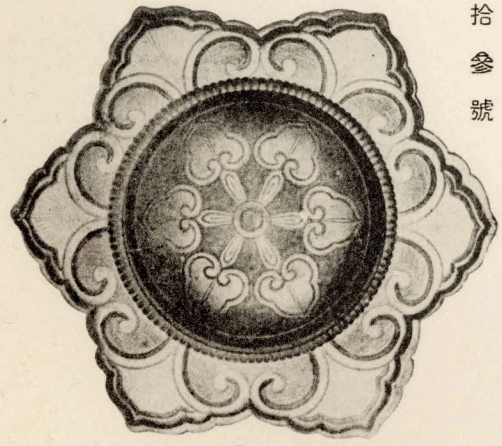
四拾壹號



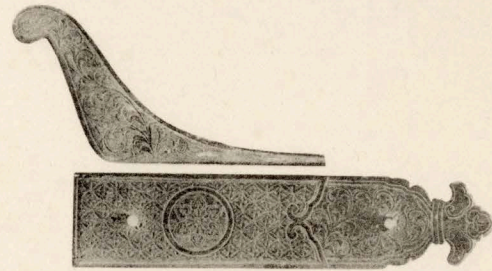
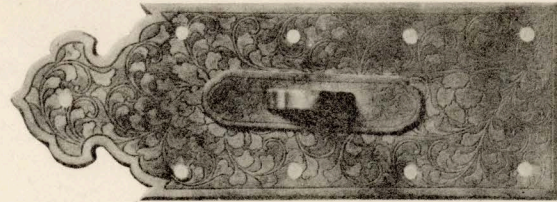
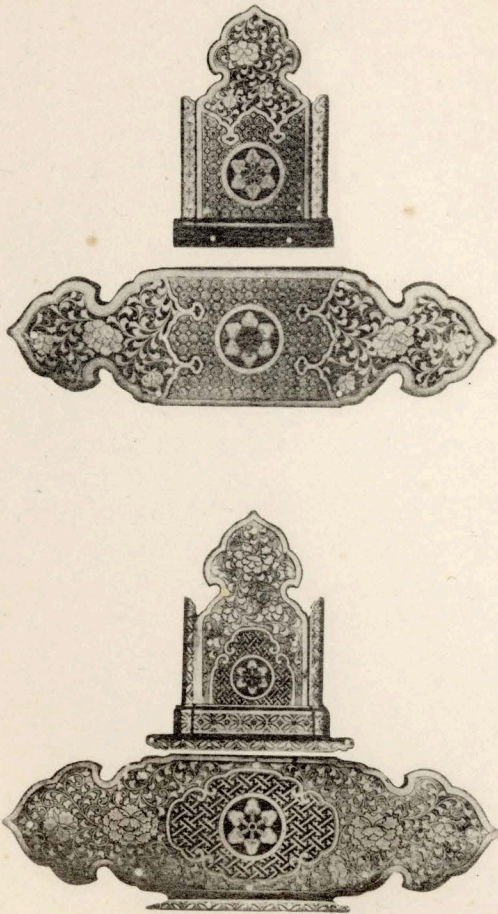
四拾貳號



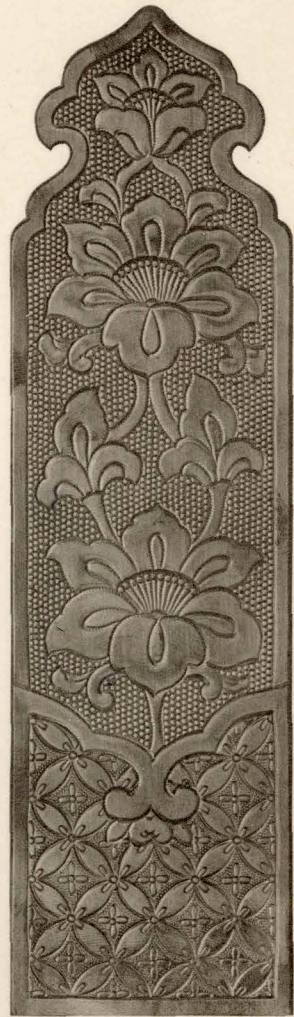
四拾參號



御
棚
金
物



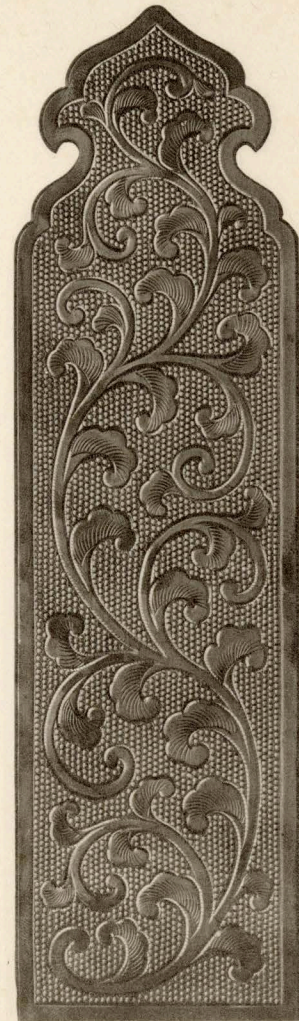
御
棚
金
物



高欄金物

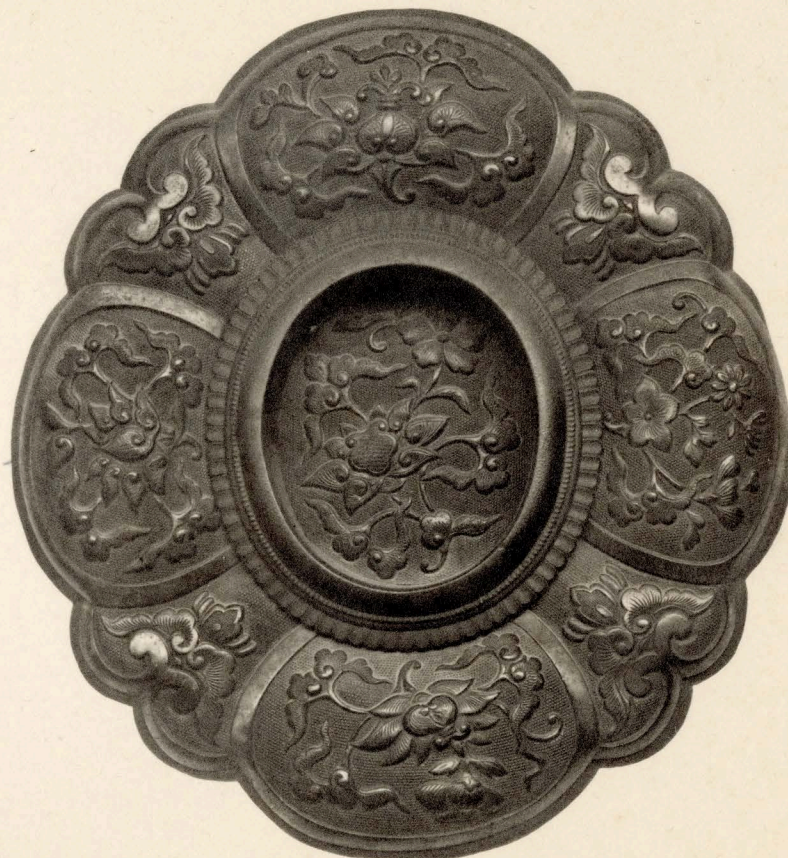


御棚金物

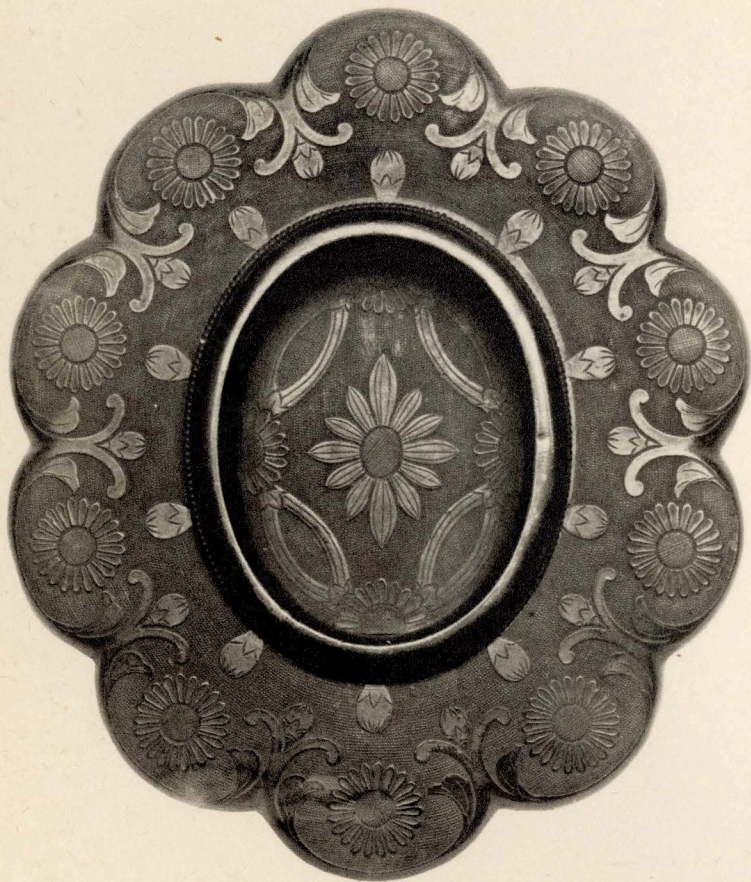


御襖引手 第壹圖

壹
號

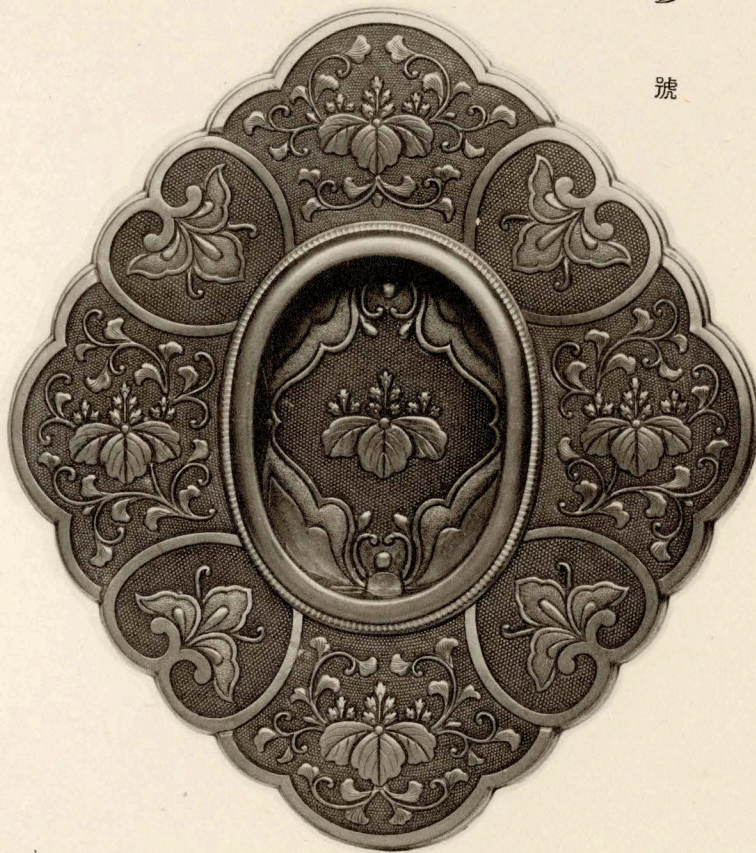


貳
號



御襖引手 第貳圖

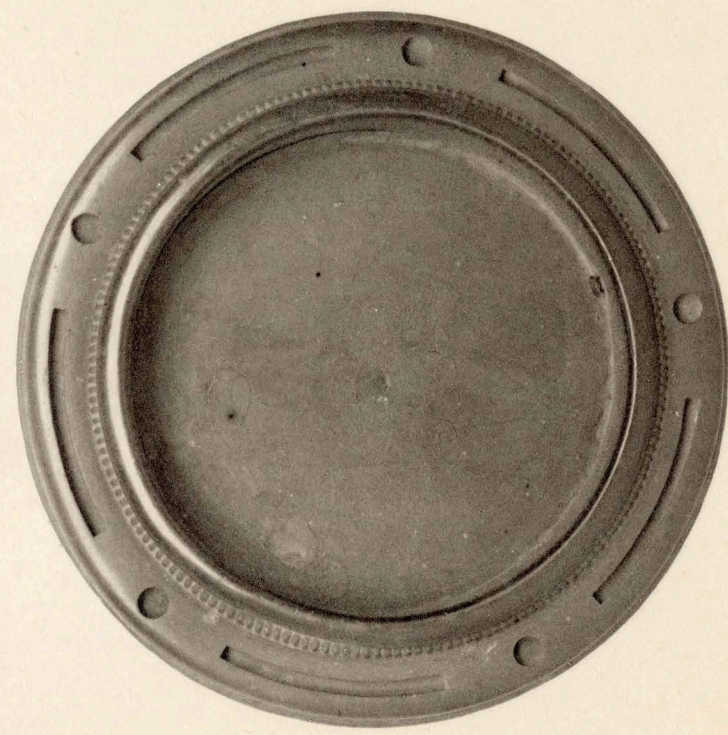
參號



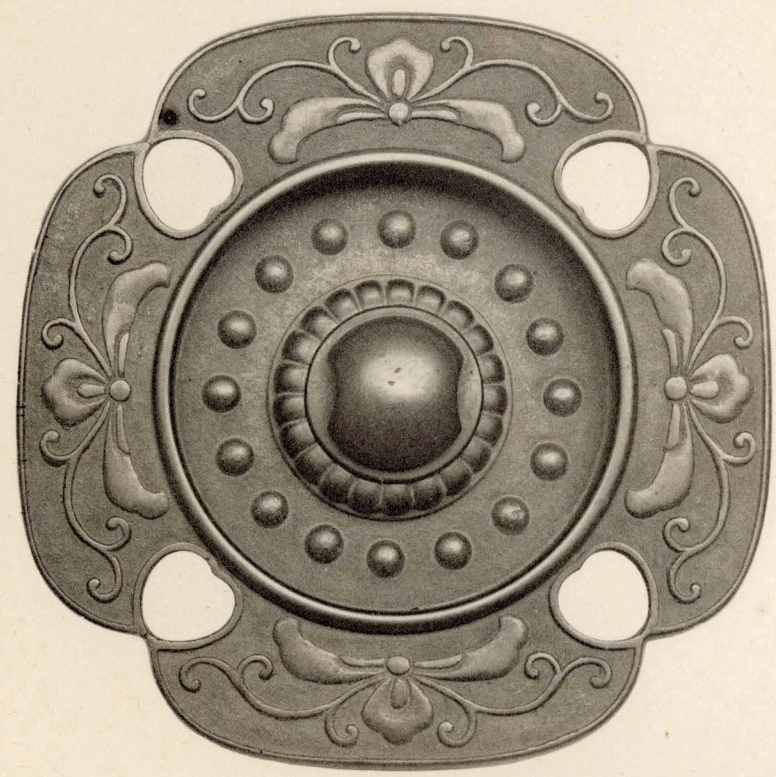
同上
四號

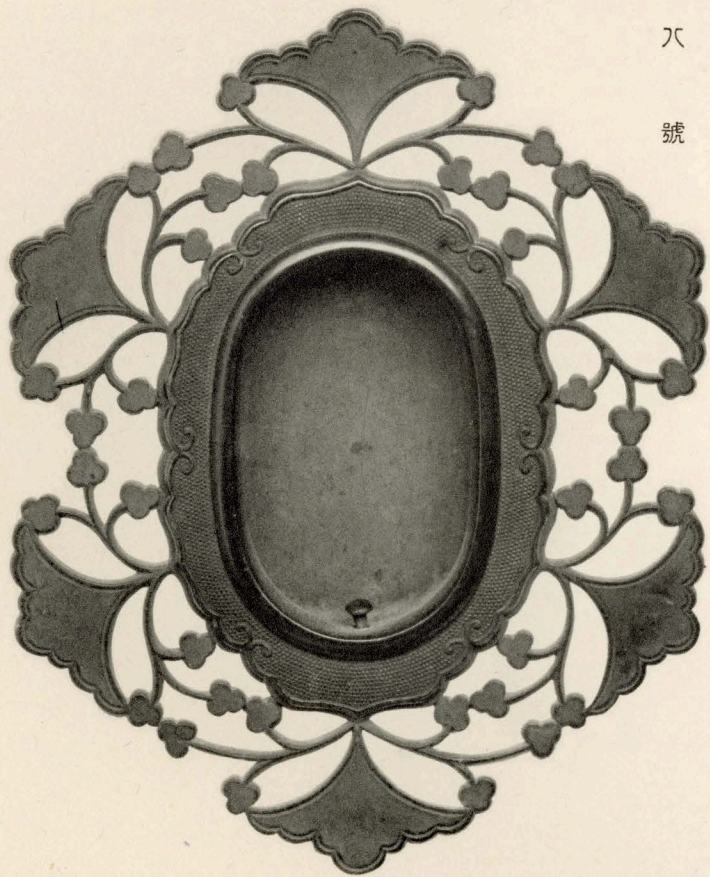


五
號

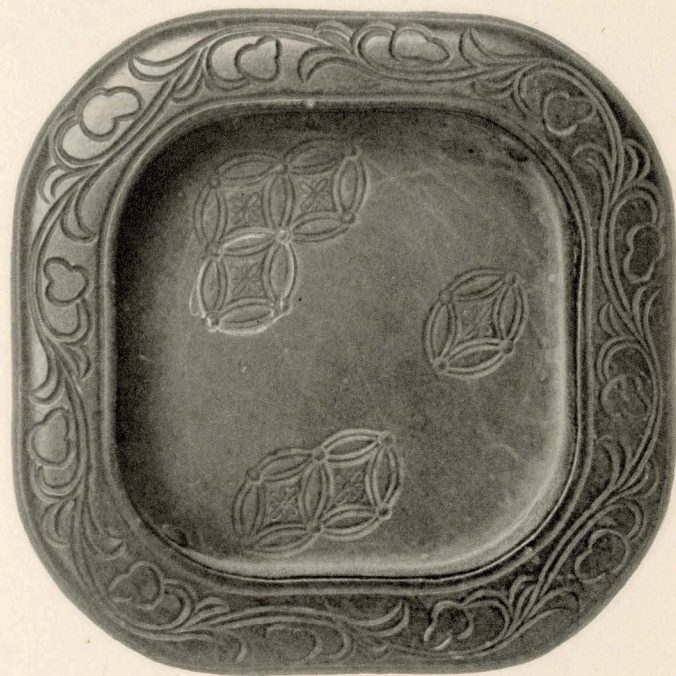


六
號



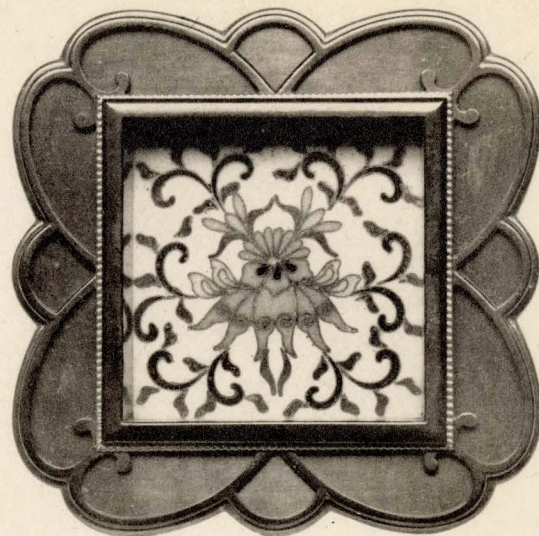


八
號

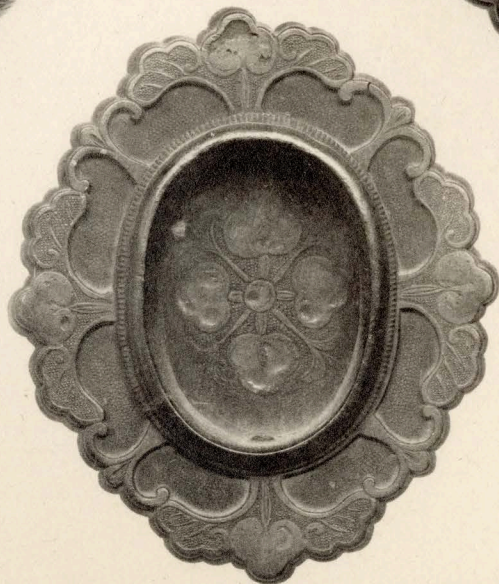


御
襖
引
手
第
四
圖
七
號

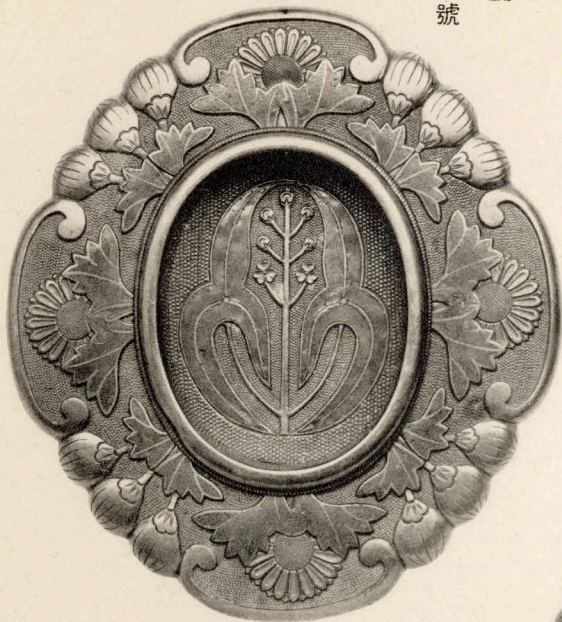
御襖引手 第五圖
九號



同上
拾號

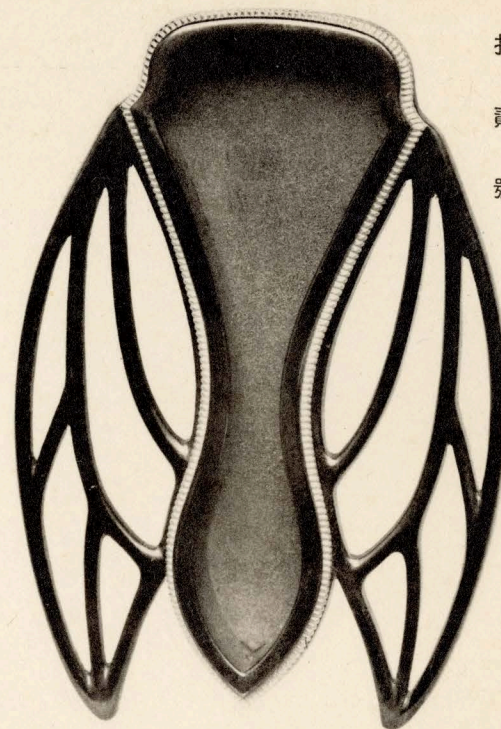


同上
拾壹號



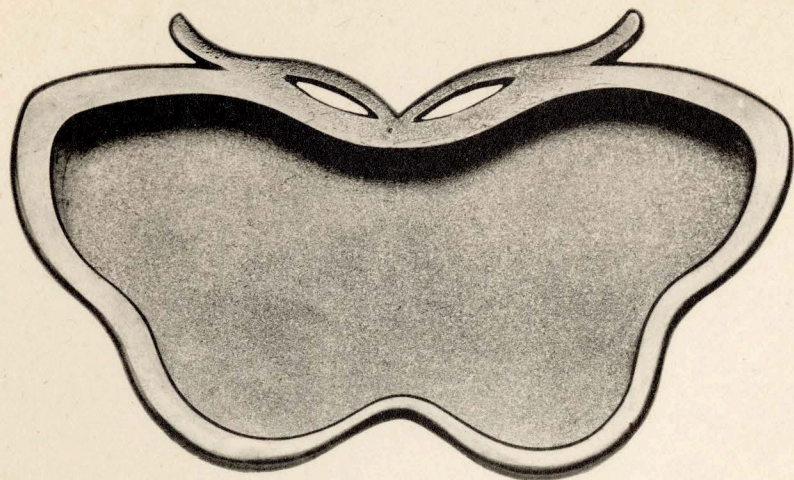
御襖引手 第六圖

拾貳號



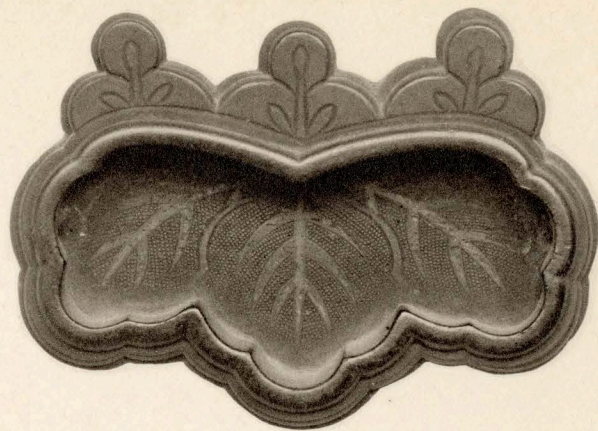
同上
拾四號

同上
拾參號



御襖引手 第七圖

拾五號



同
拾六號

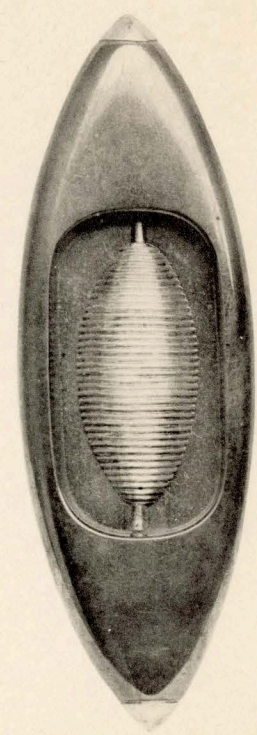


同
拾七號

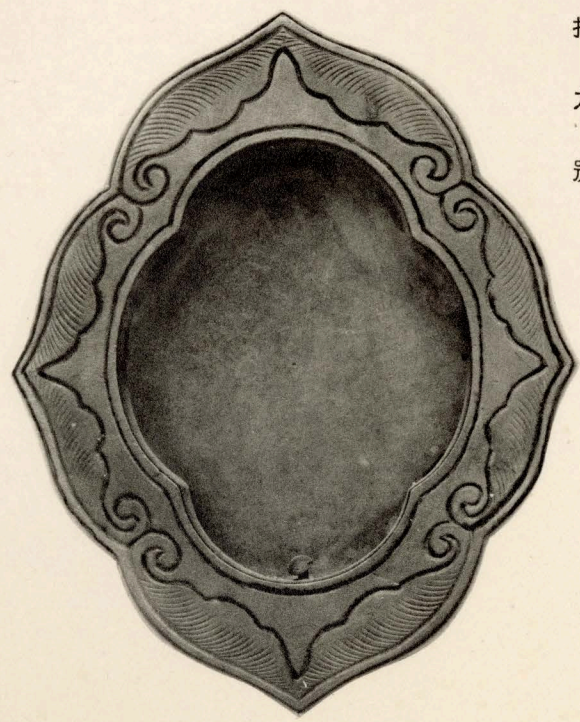


御襖引手 第八圖

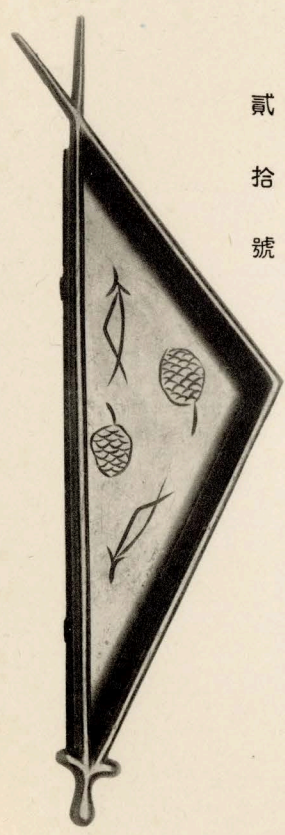
拾
八
號



同
上
拾
九
號



同
上
貳
拾
號



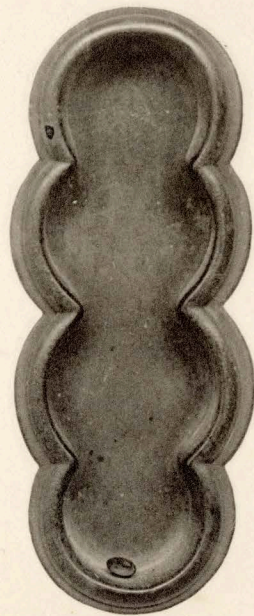
御襖引手 第九圖

貳拾壹號



同上

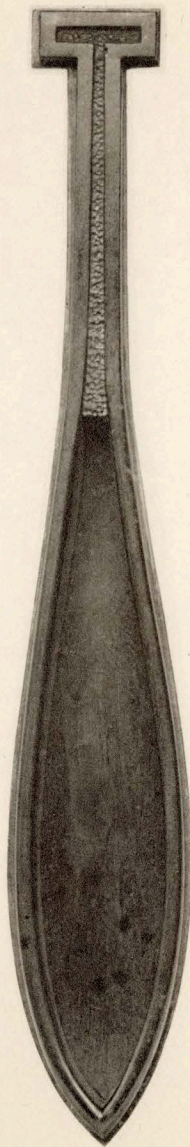
貳拾貳號



同

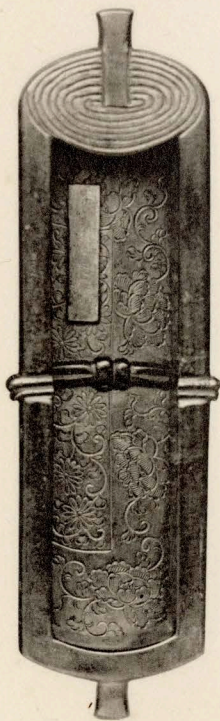
上

貳拾參號



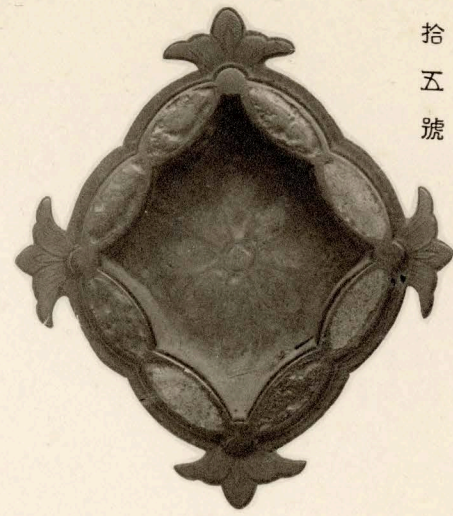
同上

貳拾四號



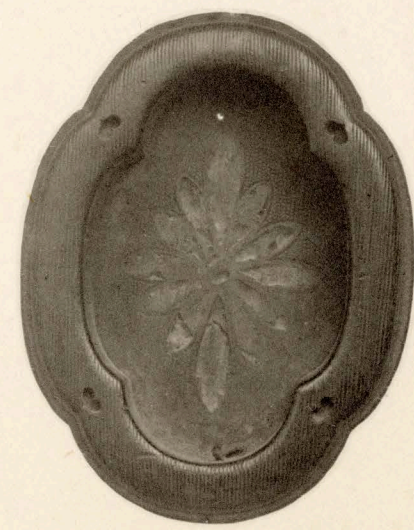
御襖引手 第拾圖

貳拾五號

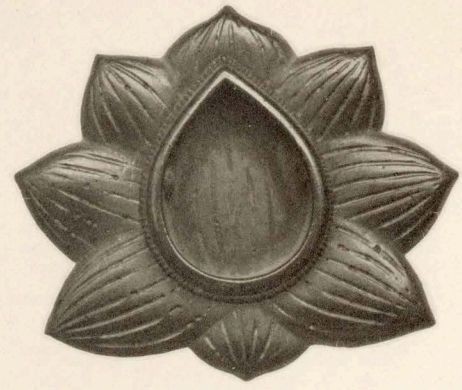


同 上

貳拾六號

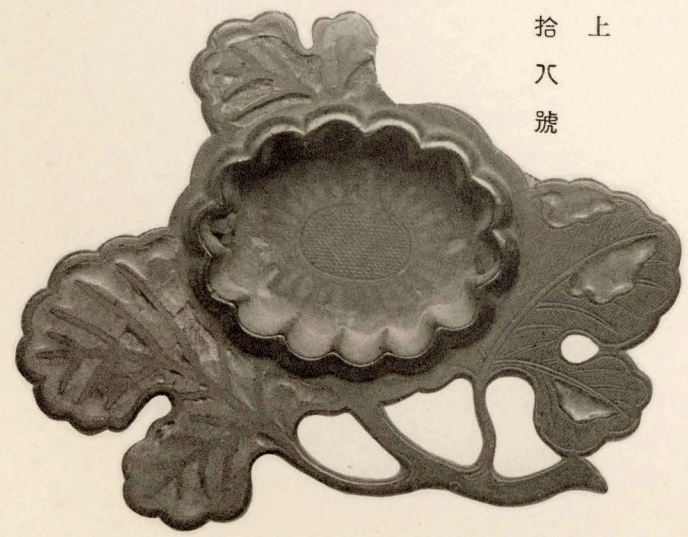


同 上
貳拾七號



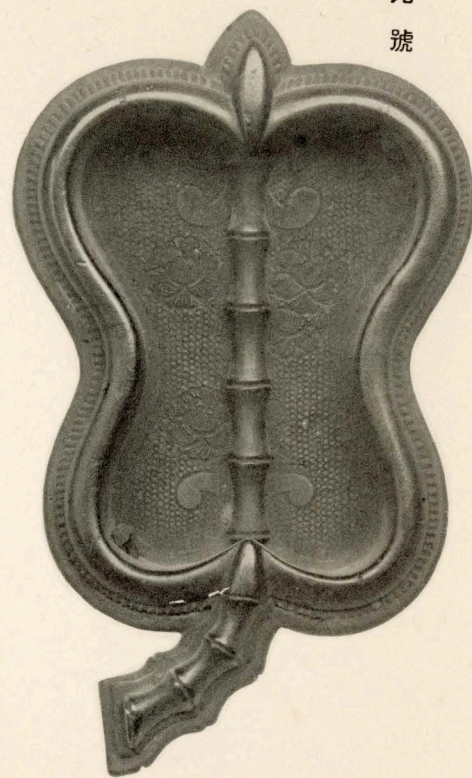
同 上

貳拾八號

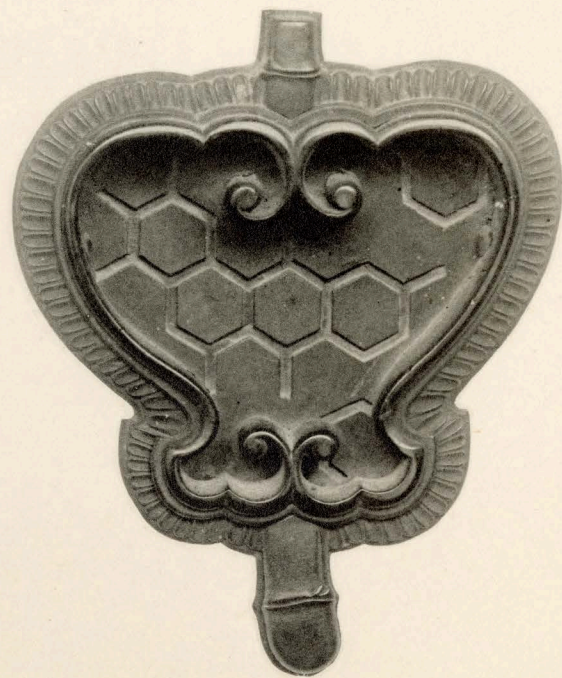


御襖引手 第拾壹圖

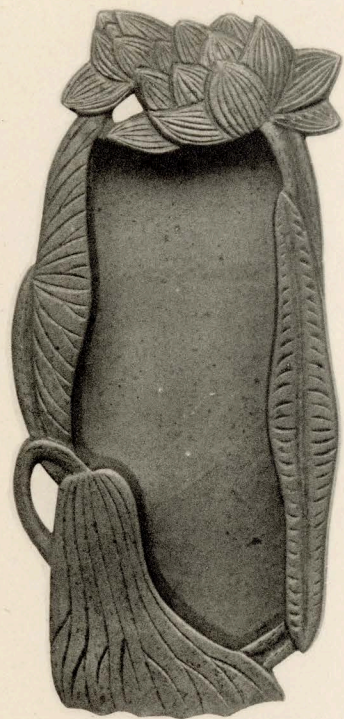
貳拾九號



同上
參拾號

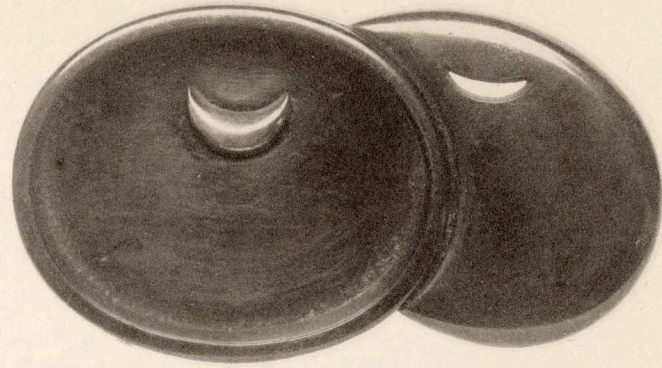


同上
參拾壹號



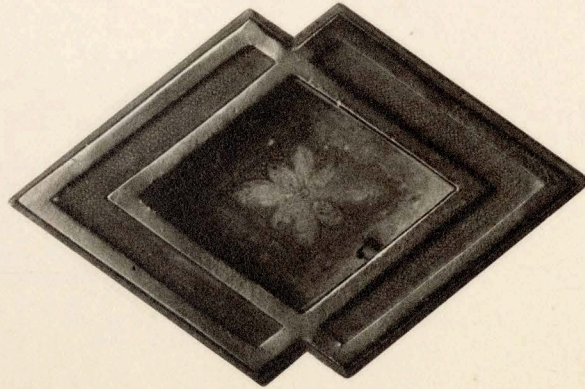
御襖引手 第拾貳圖

參拾貳號



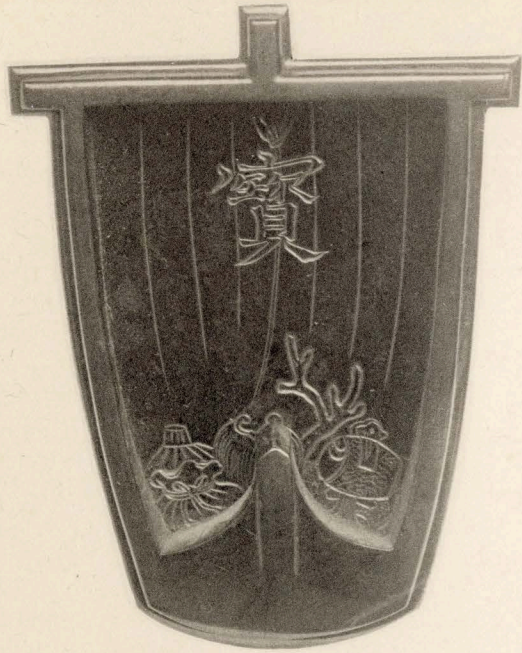
同

參拾參號



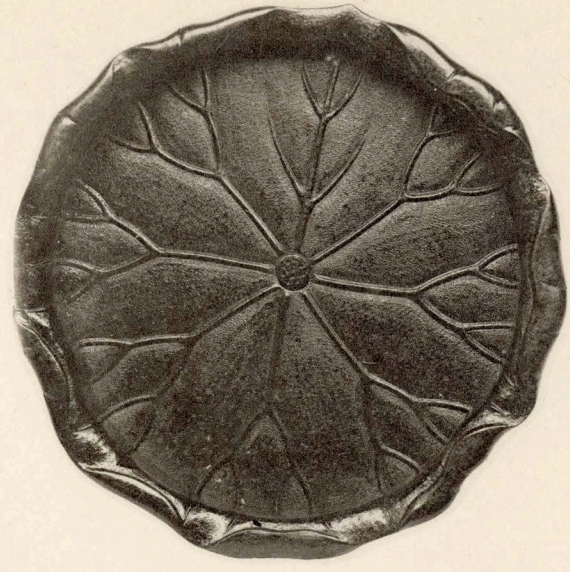
同

參拾四號



御襖引手 第拾參圖

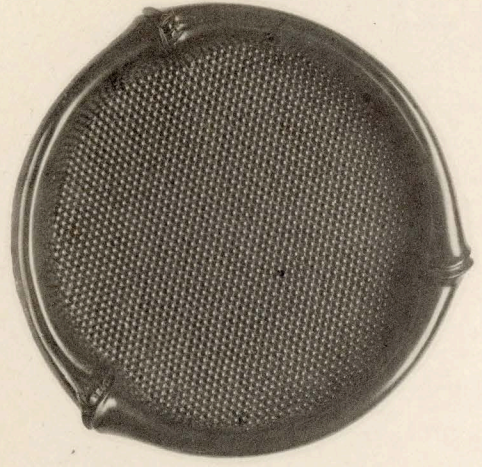
參拾五號



同上
參拾六號

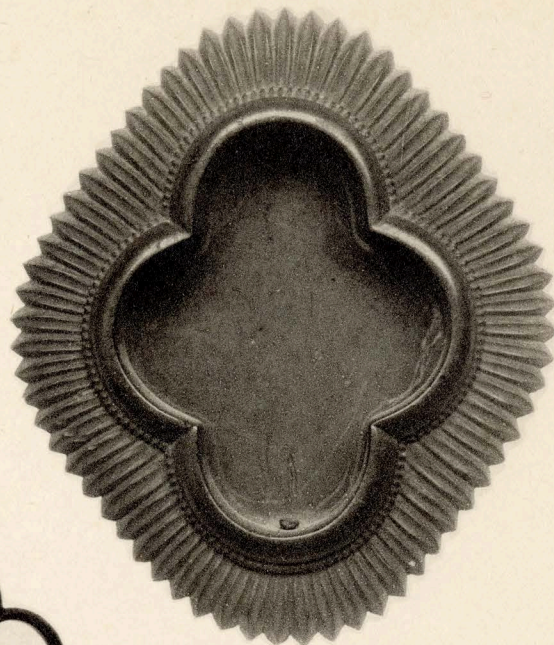


同上
參拾七號



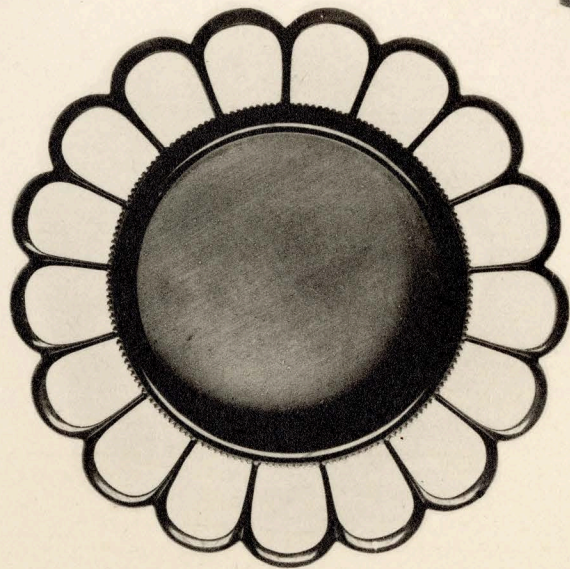
御襖引手 第拾四圖

參拾八號



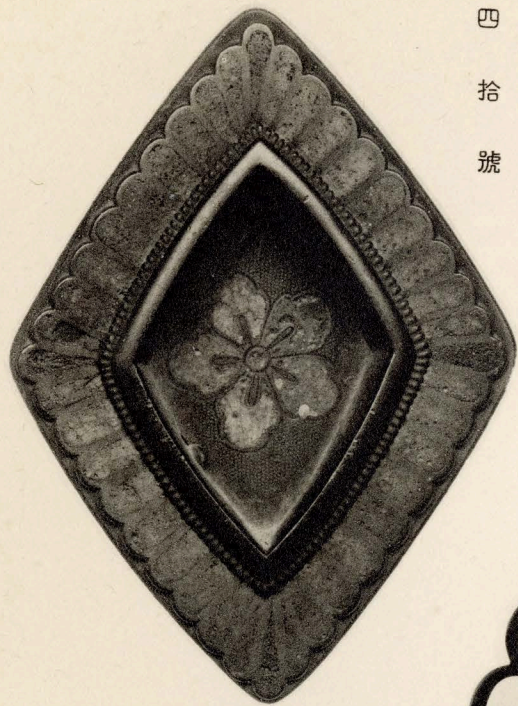
同上

參拾九號



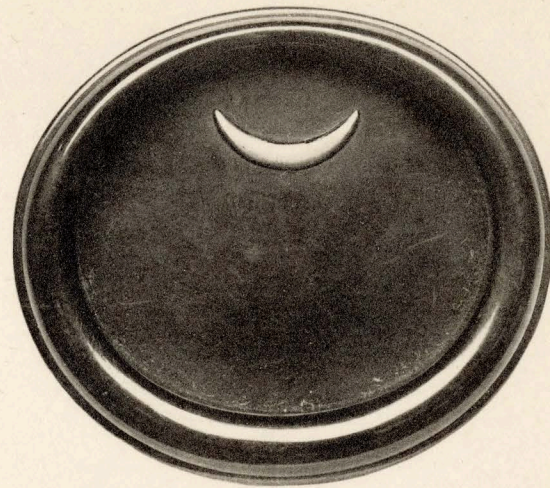
同上

四拾號



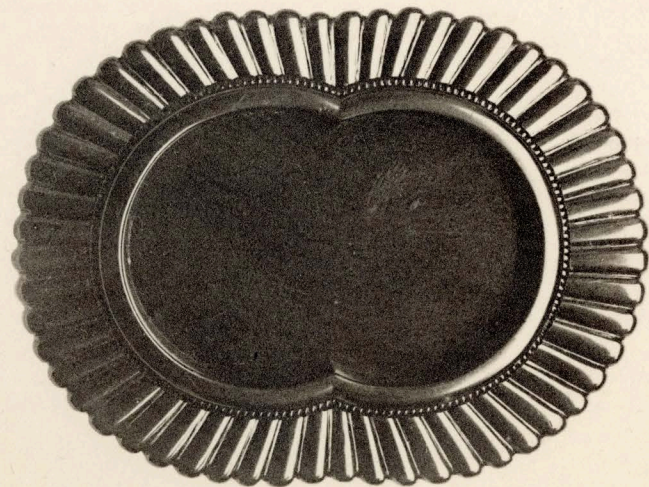
御襖引手 第拾五圖

四拾壹號



同

四拾貳號



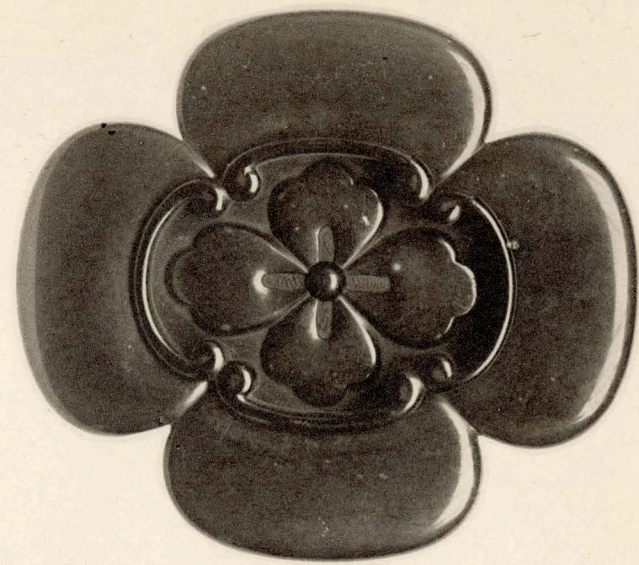
同

四拾參號

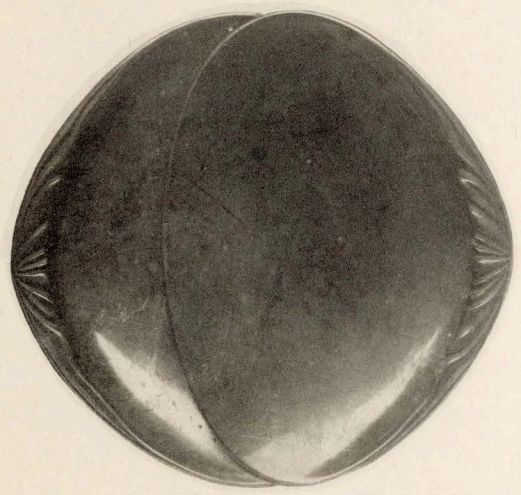


御襖引手 第拾六圖

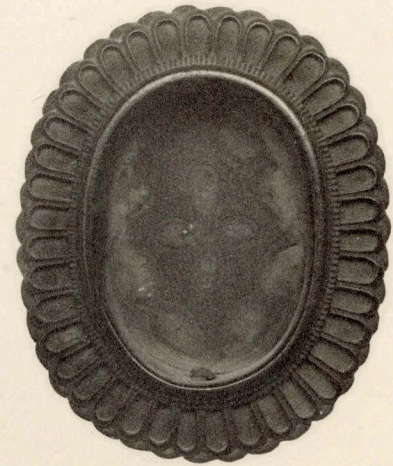
四拾四號



同
上
四拾六號

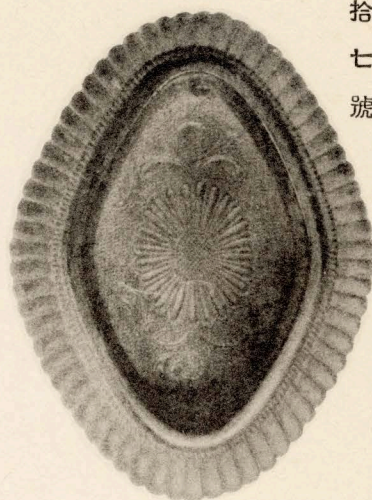


同
上
四拾五號



御襖引手 第拾七圖

四拾七號



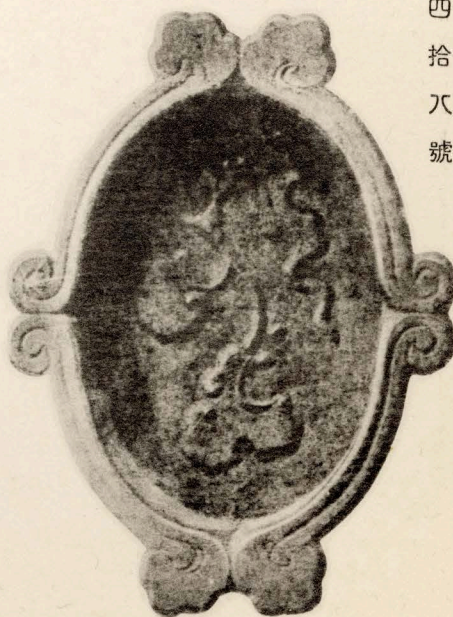
同上

四拾九號



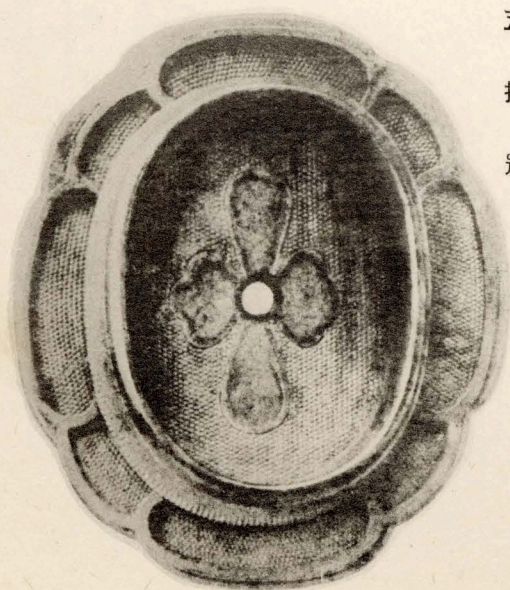
同上

四拾八號



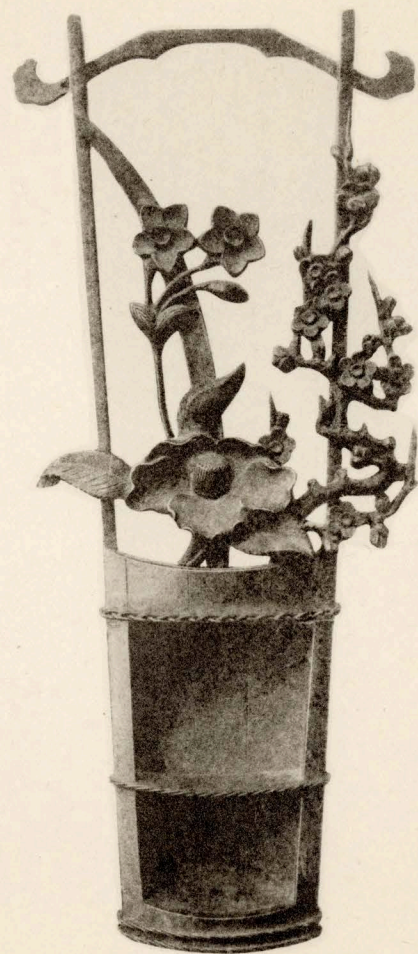
同上

五拾號



御襖引手 第拾八圖

五拾壹號



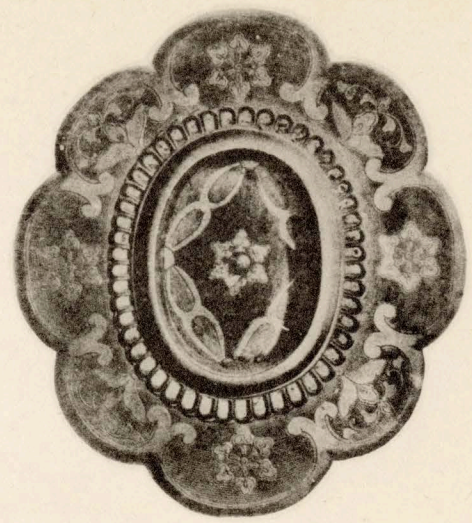
同上

五拾貳號



御襖引手 第拾九圖

五拾參號

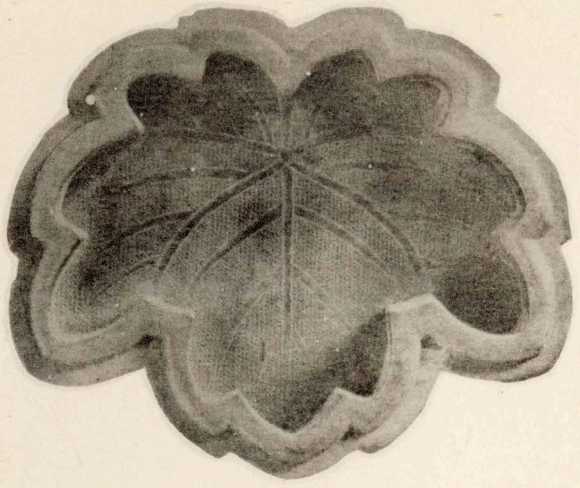


同

五拾四號

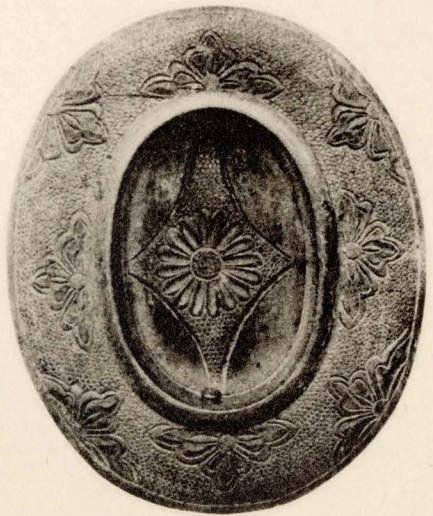
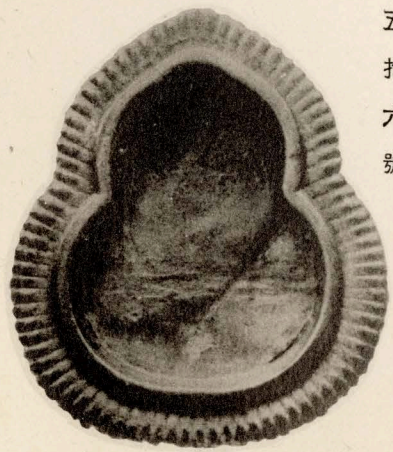
同

五拾五號



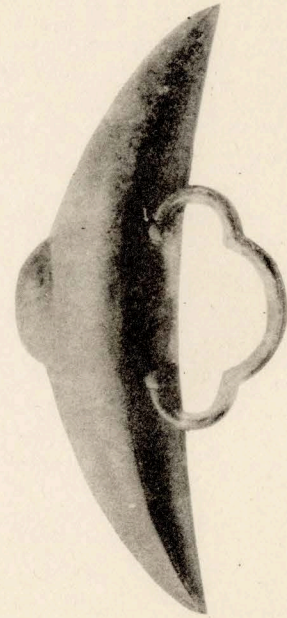
同

五拾六號

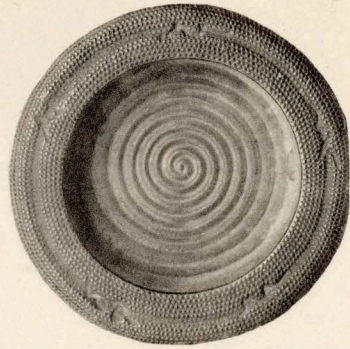


御襖引手 第貳拾圖

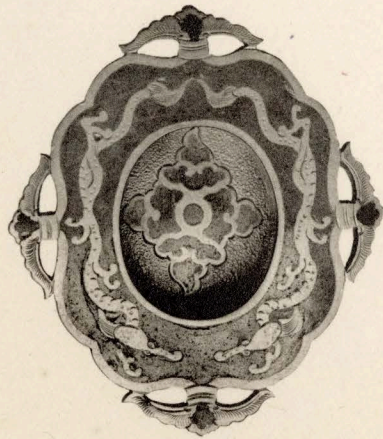
五拾七號



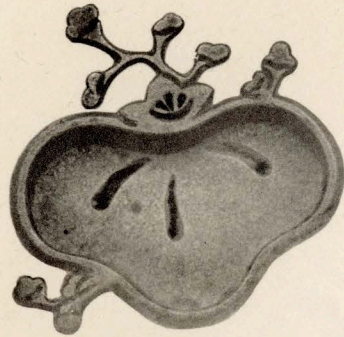
同上
五拾八號



同上
五拾九號



同上
六十號



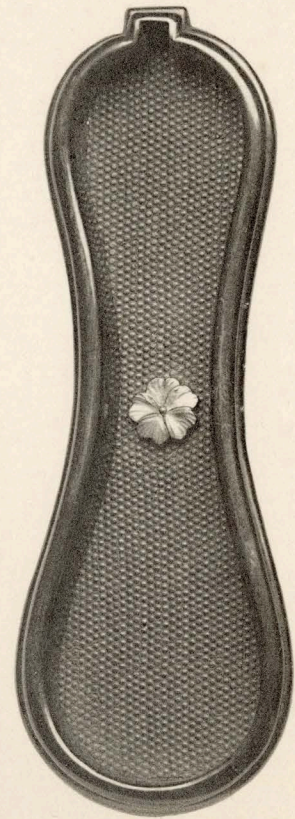
御襖引手 第貳拾壹圖

六拾壹號



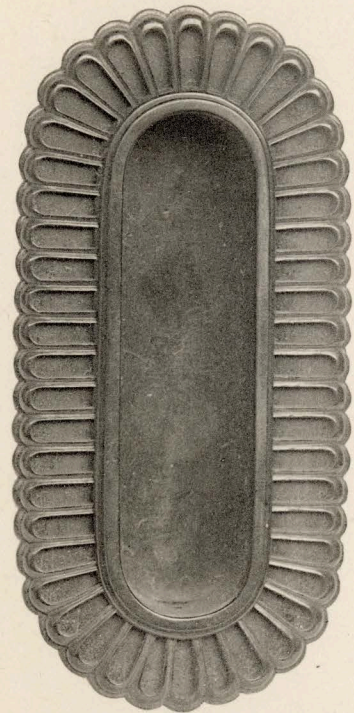
同上

六拾貳號



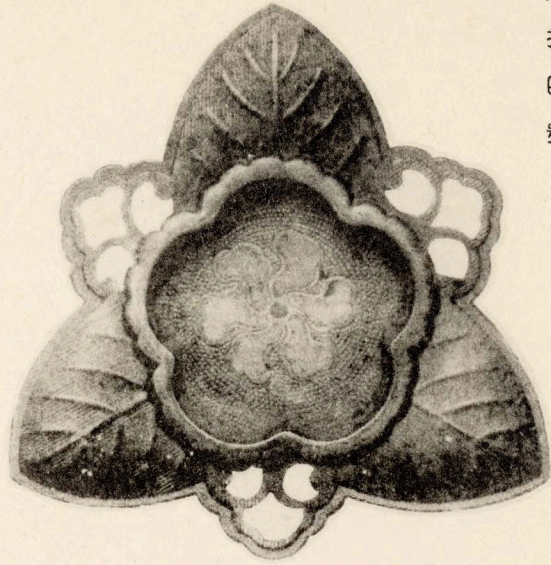
同上

六拾參號



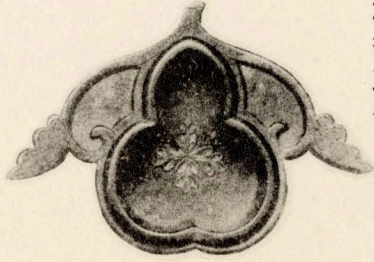
御襖引手 第貳拾貳圖

六拾四號



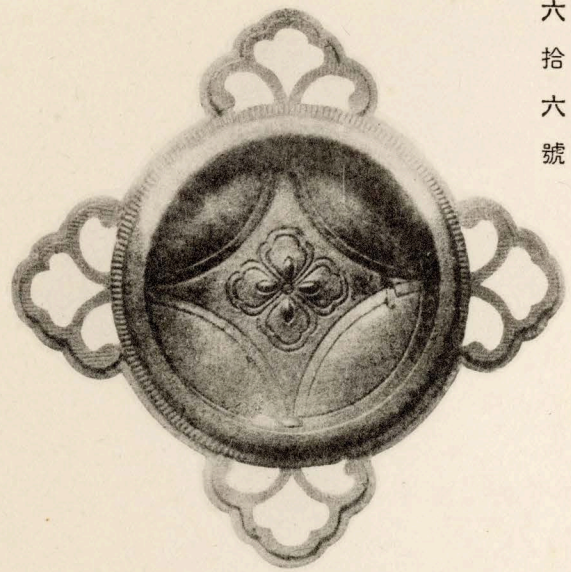
同上

六拾五號



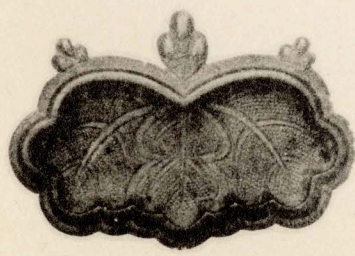
同上

六拾六號



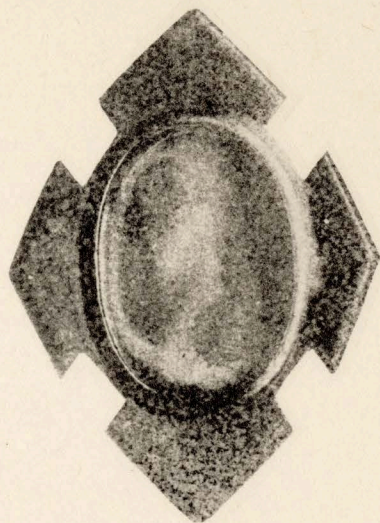
同上

六拾七號



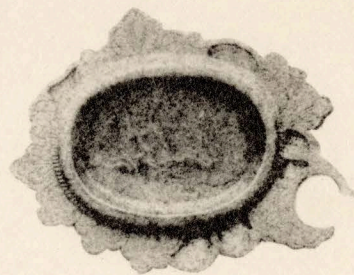
御襖引手 第貳拾參圖

六拾八號



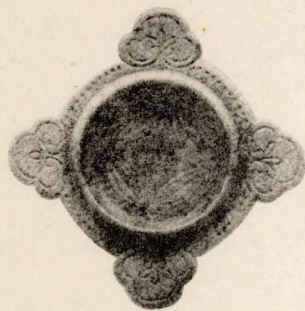
同上

七拾號



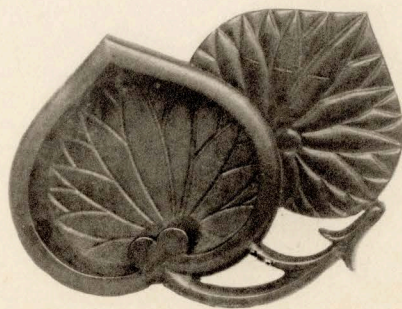
同上

七拾貳號



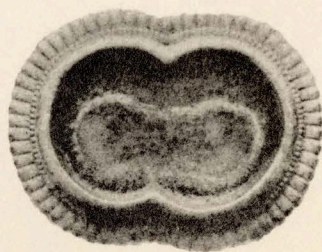
同上

六拾九號



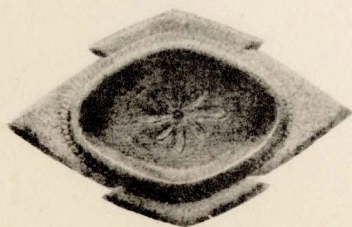
同上

七拾壹號



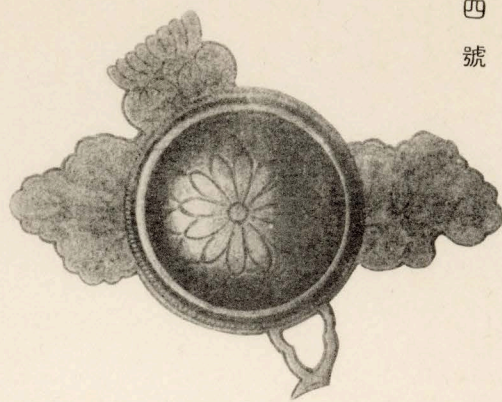
同上

七拾參號



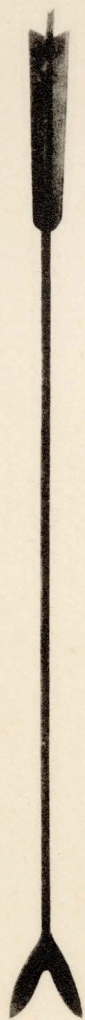
御襖引手 第貳拾四圖

七拾四號



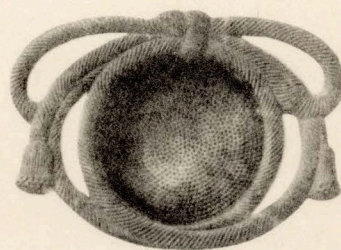
同

七拾七號



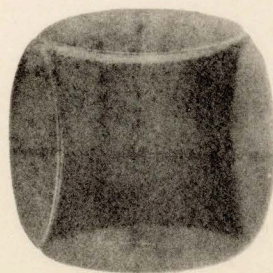
同

七拾五號



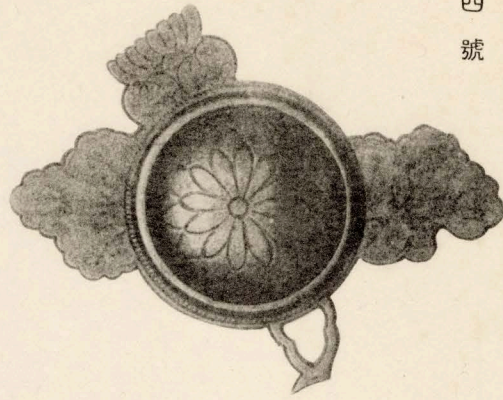
同

七拾六號



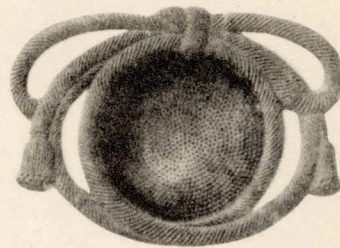
御襖引手 第貳拾四圖

七拾四號



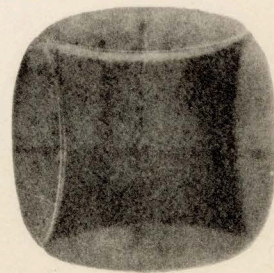
同

七拾五號



同

七拾六號



同

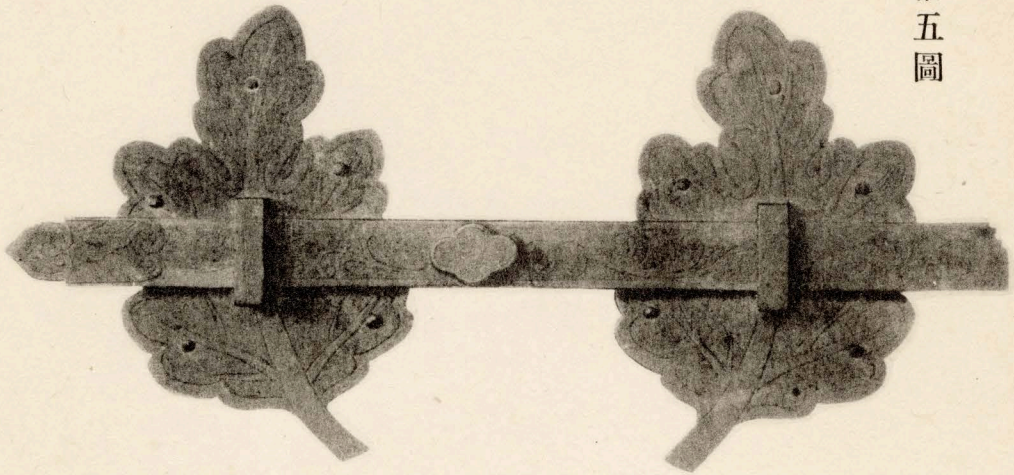
七拾七號



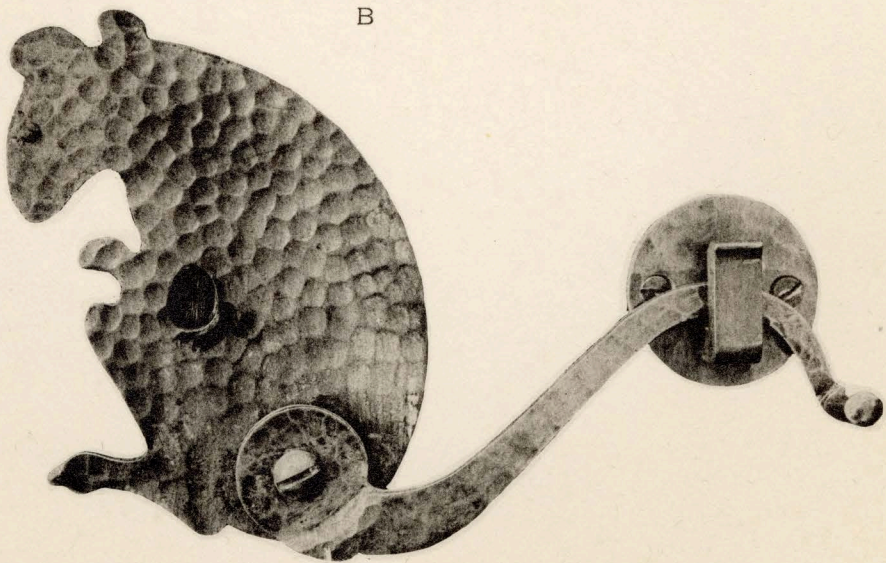
御襖引手

第貳拾五圖

A



B



御襖引手 第貳拾六圖



11



10



13



12



15



16



14



18



17



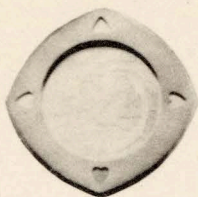
20



19



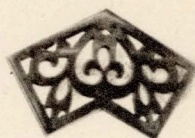
23



22



21



25



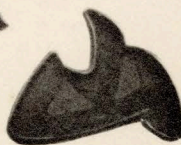
24



27



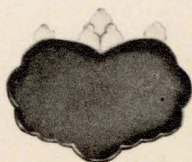
26



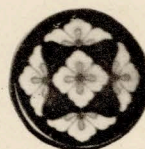
30

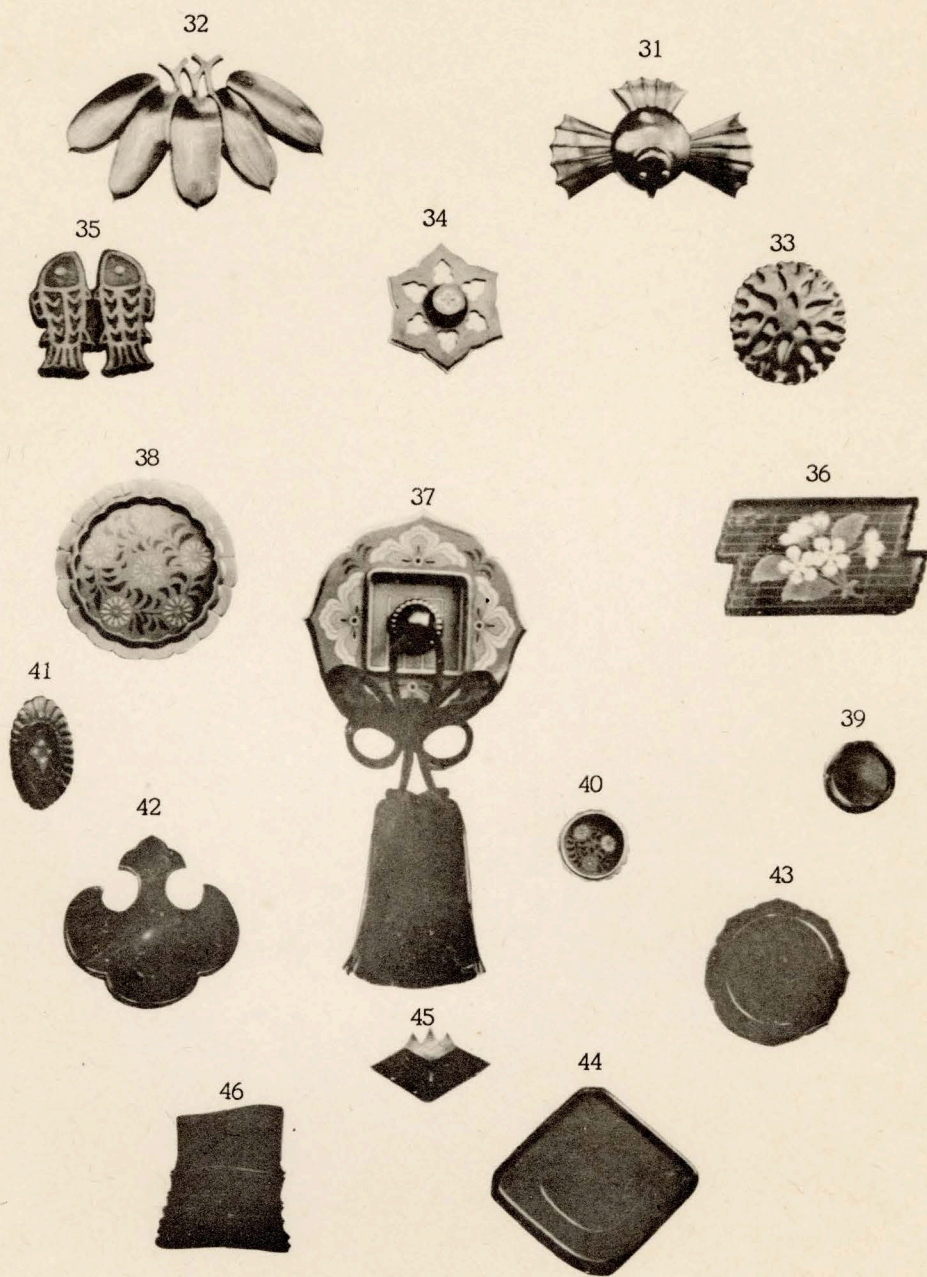


29



28





障子引手 第壹圖

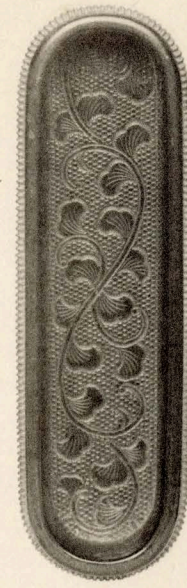
壹號



貳號



參號



四號



五號



障子引手 第貳圖

六號



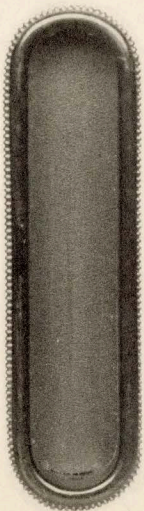
七號



八號



九號



拾號



拾壹號

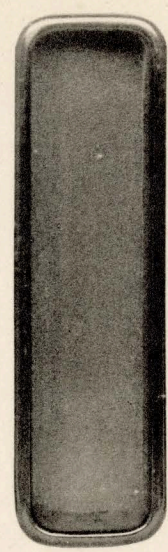


障子引手 第參圖

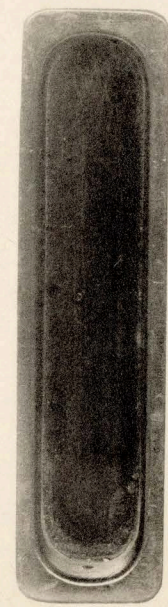
拾貳號



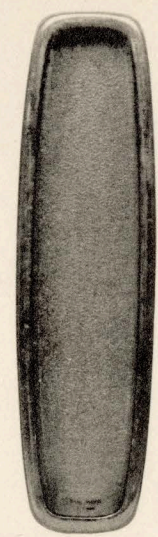
拾參號



拾四號



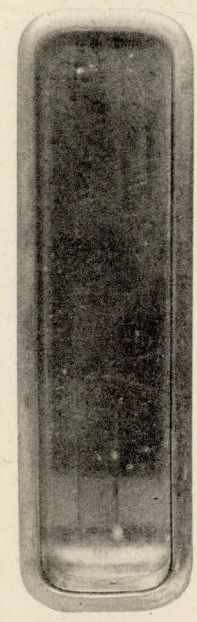
拾五號



拾六號



拾七號



障子引手 第四圖

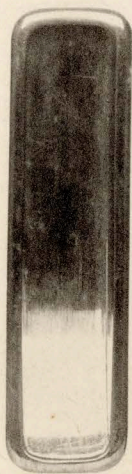
拾八號



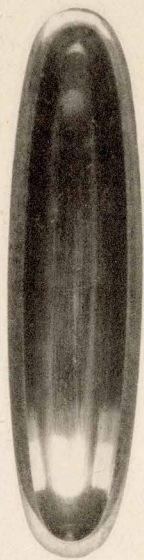
拾九號



貳拾號



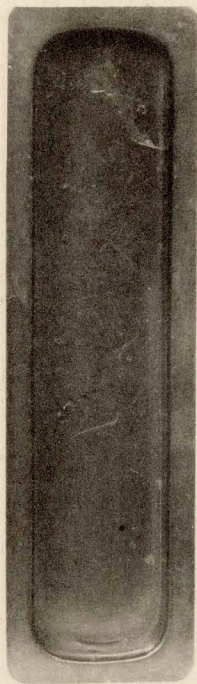
貳拾壹號



貳拾貳號



貳拾參號



昭和三年七月二十日印刷
昭和三年七月二十五日發行

(定價金貳圓五拾錢)

金物製作

京都市東洞院松原北入

發行兼
發賣所

中

中 棊常七本店

電話 東京二八一九番
振替 大阪七四三五番

同支店

大阪市東區北久寶寺町四丁目
電話 船場一八〇五番
振替 大阪四九〇四番

不許
複製

